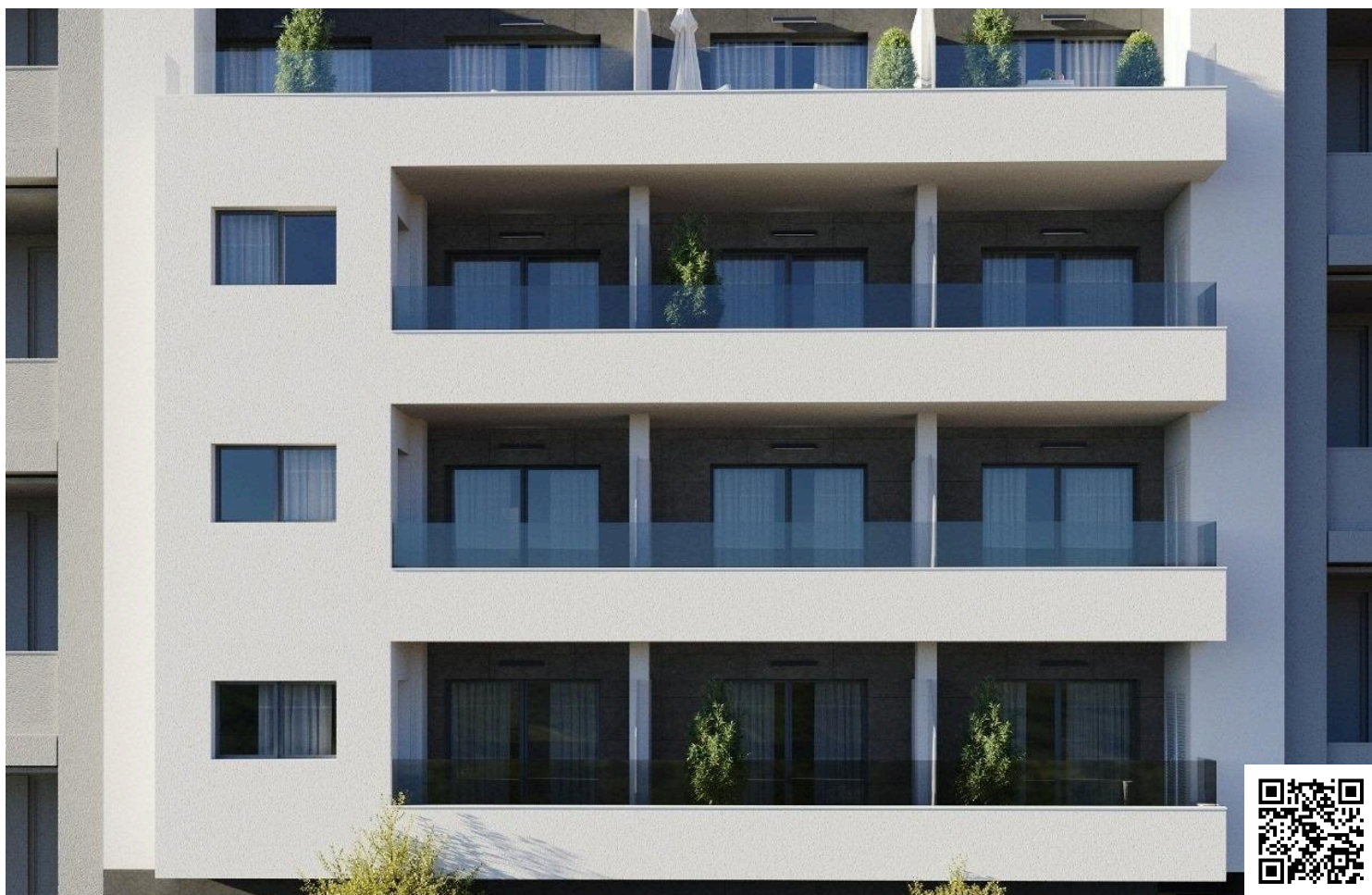


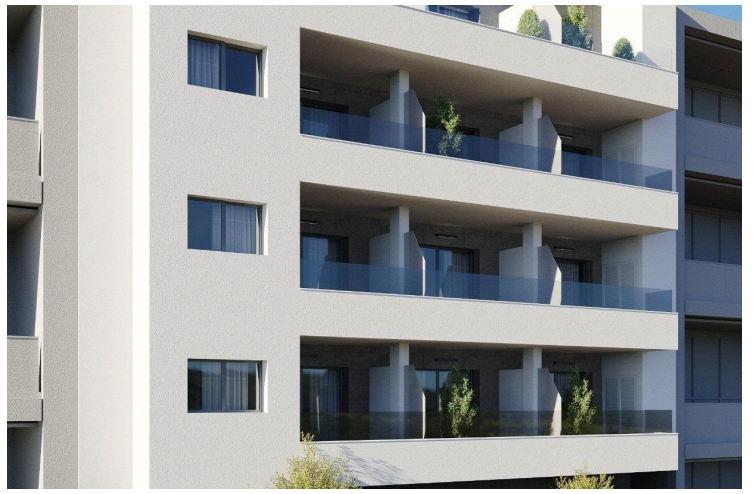
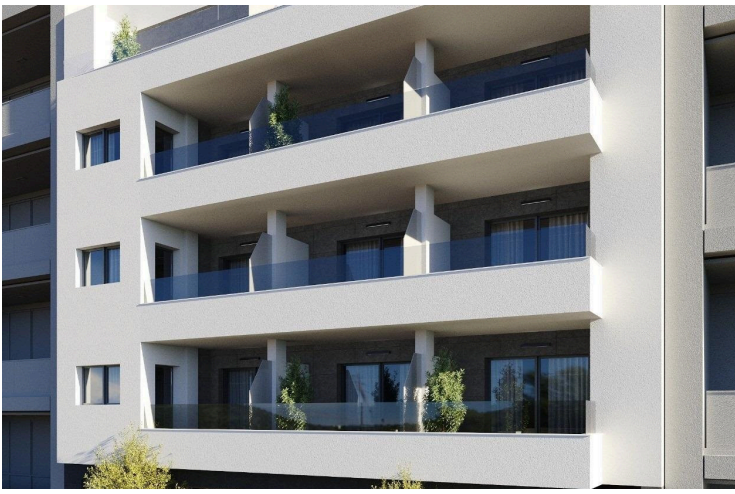
#11285

# New Build Apartments in Torrevieja Just 400 m from Playa del Cura

 Torrevieja, Alicante

€329,000





# Overview

## Specifications

Bedrooms

 3

Bathrooms

 2

Covered

 92 m<sup>2</sup>

Type

**Apartment**

Uncovered veranda

**8 m<sup>2</sup>**

Status

**Key ready**

Energy efficiency rating

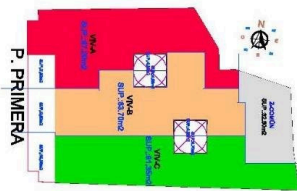
 **B**

## Description

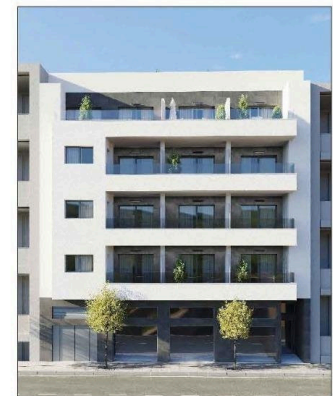
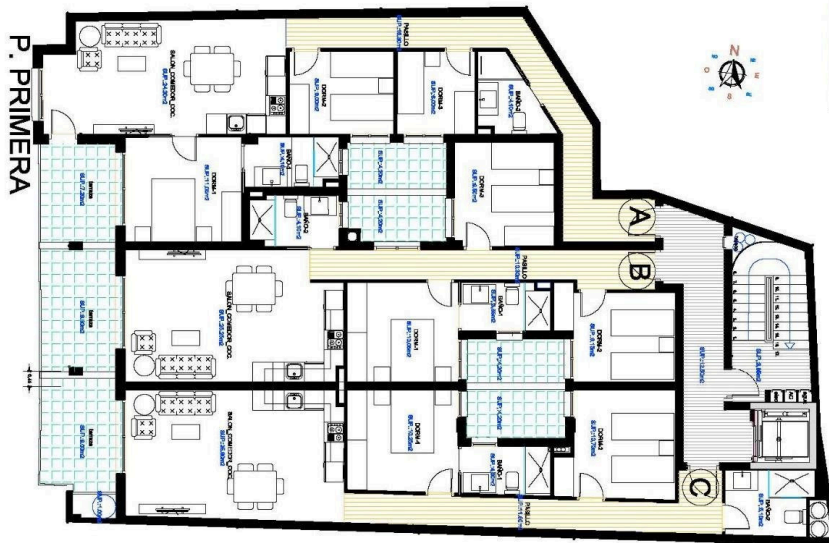
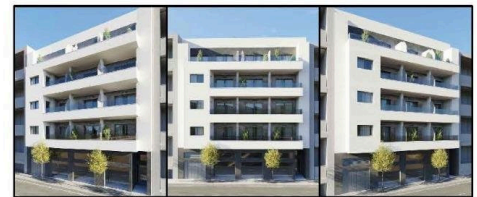
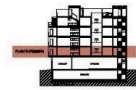
New Build Apartments in Torrevieja Just 400 m from Playa del Cura Prime Location in the Heart of Torrevieja Discover these brand new apartments and penthouses in one of the most sought after areas of Torrevieja, only 400 m from Playa del Cura and just 150 m from the seafront promenade. Located in the city centre, this vibrant neighborhood offers all essential services within walking distance, including supermarkets, shops, restaurants, cafes and public transport. Torrevieja is a well known coastal city on the Costa Blanca, famous for its mild Mediterranean climate, lively atmosphere and year round lifestyle by the sea. Modern Apartments with Spacious Layouts This exclusive new development consists of only 12 apartments and penthouses with 2 or 3 bedrooms, designed to offer comfort, functionality and contemporary style. Middle floor apartments feature generous terraces, while the penthouses enjoy an additional private solarium, ideal for sunbathing or outdoor dining. All homes include an open plan kitchen connected to the living and dining area, creating bright and welcoming interiors. Bedrooms come with fitted wardrobes, and bathrooms are fully equipped with furniture, mirrors and shower screens. Optional underground parking spaces and storage rooms are available at an extra cost. Quality Finishes and Energy Efficient Features The apartments are built with high quality materials and a strong focus on energy efficiency. Exterior aluminum carpentry includes thermal break technology and double glazing for thermal and acoustic insulation. Motorized shutters add comfort and security. Each home has pre installation for ducted air conditioning and heating, reinforced entrance doors and white lacquered interior doors. Hot water is produced through an aerothermal system, reducing energy consumption and improving sustainability. Rooftop Solarium with Communal Pool Residents can enjoy an exclusive rooftop solarium with a communal swimming pool, accessible by lift or stairs. This private area is perfect for relaxing, sunbathing and enjoying open views over the city. It provides a peaceful retreat above the lively streets of Torrevieja and adds significant value to the development. Torrevieja Lifestyle and Surroundings Torrevieja is known for its long coastline, sandy beaches and iconic salt lagoons. The Natural Park of La Mata and Torrevieja lagoons is approximately 5 km away and offers walking trails and unique landscapes. Several golf courses such as Villamartin Golf and Las Colinas Golf are within 12 to 18 km. Torrevieja Marina and port are around 1 km away. Alicante Airport is approximately 45 km and Murcia International Airport around 65 km, both with excellent European connections. Your Coastal Home Awaits Do not miss this opportunity to own a modern new build apartment close to the beach in Torrevieja. Contact us today for more information or to arrange a private viewing.



# Floor plans



CUADRO DE SUPERFICIES			
SUPERFICIE VIVIENDA TIPO (PLANTA 1)			
	VV-A	VV-B	VV-C
SALÓN COMEDOR COCINA	24,30 m <sup>2</sup>	23,20 m <sup>2</sup>	25,30 m <sup>2</sup>
PASILLO	15,30 m <sup>2</sup>	19,30 m <sup>2</sup>	11,80 m <sup>2</sup>
DORMITORIO-1	11,65 m <sup>2</sup>	19,00 m <sup>2</sup>	10,25 m <sup>2</sup>
BANO-1	4,10 m <sup>2</sup>	3,85 m <sup>2</sup>	4,30 m <sup>2</sup>
DORMITORIO-2	8,00 m <sup>2</sup>	9,15 m <sup>2</sup>	10,70 m <sup>2</sup>
DORMITORIO-3	9,00 m <sup>2</sup>	8,50 m <sup>2</sup>	8,30 m <sup>2</sup>
BANO-2	4,10 m <sup>2</sup>	4,10 m <sup>2</sup>	5,10 m <sup>2</sup>
SUP. UTIL. PATIO	4,20 m <sup>2</sup>	8,40 m <sup>2</sup>	4,20 m <sup>2</sup>
SUP. UTIL. TERRAZA-1	7,20 m <sup>2</sup>	8,80 m <sup>2</sup>	9,30 m <sup>2</sup>
TOT. SUP. UTIL. VIVIENDA (Terrazas cubiertas y galerías al 100%)	84,25 m <sup>2</sup>	89,40 m <sup>2</sup>	80,65 m <sup>2</sup>
SUP. CONSTR. VIVIENDA (Mín. 5. Construcc., terrazas 100%)	91,50 m <sup>2</sup>	92,70 m <sup>2</sup>	85,85 m <sup>2</sup>
SUP. CONSTRUIDA COMUNES	18,69 m <sup>2</sup>	18,73 m <sup>2</sup>	17,59 m <sup>2</sup>
SUPERFICIE CONSTRUIDA TOTAL	110,19 m <sup>2</sup>	111,43 m <sup>2</sup>	103,44 m <sup>2</sup>



PLANTA PRIMERA



# Additional information

## Facilities

Aircondition, Provision

Elevator

Parking, Uncovered

Pool, Communal

## Features

Near bus route

## Distances

Sea

 400 m

