

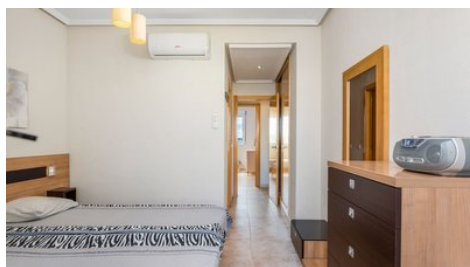
DK til Spanien



Penthouse with a great view in La Veleta

 Torrevieja, La Veleta

#1556



Price	€179,900	Type	Apartment
Bedrooms	2	Bathrooms	2
Covered	66 m ²	Roof garden	60 m ²
Uncovered veranda	10 m ²	Year of Construction	2005
Status	Resale	Floor	Penthouse / 2
Area	Torrevieja, La Veleta		

Description

A nice penthouse apartment in a closed area consisting of 4 residential complex, which surrounds a lovely large communal swimming pool.

In the apartment you have a nice living room with access to a terrace. From the terrace you have a view of the pool area.

Opposite the terrace you have, in extension of the living room, a kitchen with dishwasher and refrigerator. From the kitchen there is a patio with a washing machine.

Next to the living room, there is a primary bedroom with bathroom as well as access to the terrace. To the opposite side, next to the kitchen, there is an additional bedroom and a bathroom.

On the terrace there is an outside staircase, which leads up to a nice large solarium, with a great view to the saltlake and the mountains and you have got the sun all day.

In the apartment there is air conditioning in the living room and the primary bedroom.

Not far from the apartment there is restaurants and an Aldi (supermarket).

Placed on the sea side of the N332.

45-50 minutes to Alicante airport.

Facilities

Aircondition, Split system

Pool, Communal

Gated complex

Features

Easy access to main roads

Balcony

Entrance gate

City view

Country view

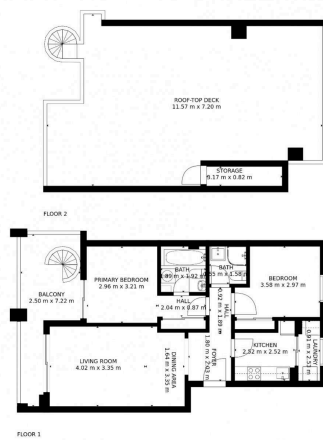
Walking distance to beach

Near bus route

Internet

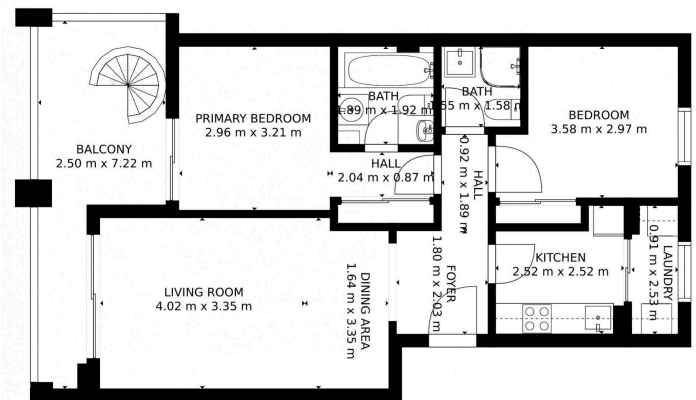
Kitchen appliances

Floor plans



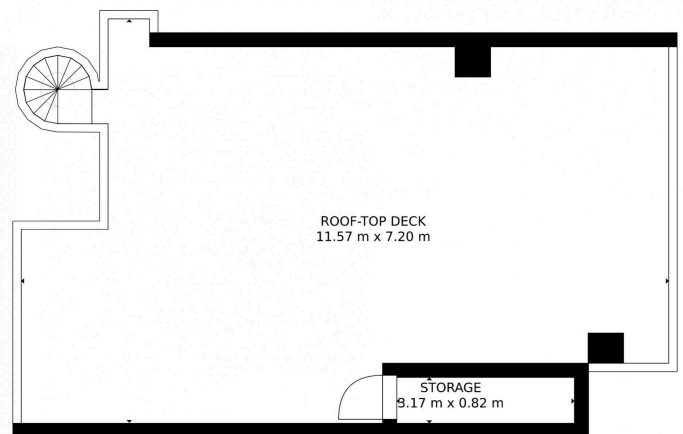
Estimated areas
GLA FLOOR 1: 0 m², excluded 87 m²
GLA FLOOR 2: 0 m², excluded 73 m²
Total GLA 0 m², total scanned area 160 m²

SIZES AND DIMENSIONS ARE APPROXIMATE. ACTUAL MAY VARY



Estimated areas
 GLA FLOOR 1: 0 m², excluded 87 m²
 GLA FLOOR 2: 0 m², excluded 73 m²
 Total GLA 0 m², total scanned area 160 m²

SIZES AND DIMENSIONS ARE APPROXIMATE. ACTUAL MAY VARY



Estimated areas
GLA FLOOR 1: 0 m², excluded 87 m²
GLA FLOOR 2: 0 m², excluded 73 m²
Total GLA 0 m², total scanned area 160 m²

SIZES AND DIMENSIONS ARE APPROXIMATE. ACTUAL MAY VARY