

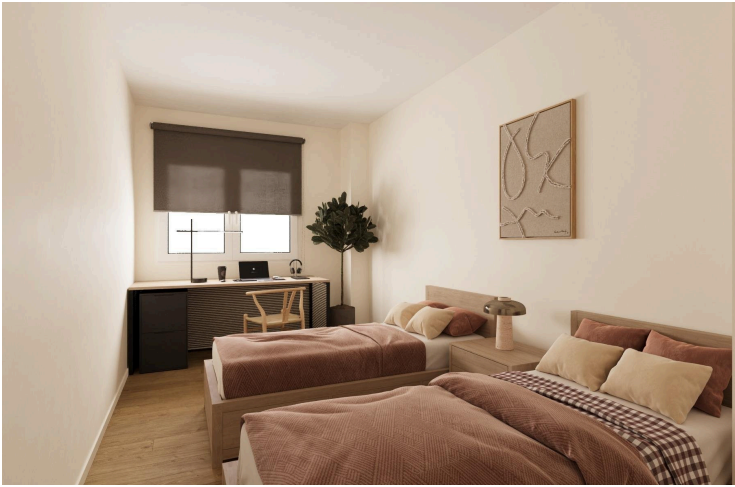
#8105

New Build Development in Águilas (Murcia), Just 300 Meters from the Beach

 Águilas, Murcia

€259,000





Overview

Specifications

Bedrooms



3

Bathrooms



2

Covered



121 m²

Type

Apartment

Status

Key ready

Energy efficiency rating



Description

New Build Development in Águilas (Murcia), Just 300 Meters from the Beach

A Modern Residential Complex Tailored to Your Needs

This exclusive new development in Águilas, Murcia, offers 105 thoughtfully designed homes with large terraces and versatile layouts, featuring 2- and 3-bedroom options to suit different lifestyles. Each property comes with a garage and storage room included in the price, providing convenience and added value.

Spacious and Bright Interiors

The homes boast functional spaces with well-planned interiors, ensuring bright and comfortable living areas. High-quality materials, such as aluminum or PVC carpentry with thermal break and double glazing, guarantee excellent insulation and energy efficiency. Entry doors feature enhanced security with reinforced hinges and locks.

Luxurious Common Areas

The development includes exceptional communal facilities, such as a large swimming pool, a fully equipped gym, and a social lounge for residents to unwind and connect. These amenities create an ideal environment for relaxation and community living.

Eco-Friendly and Energy-Efficient Design

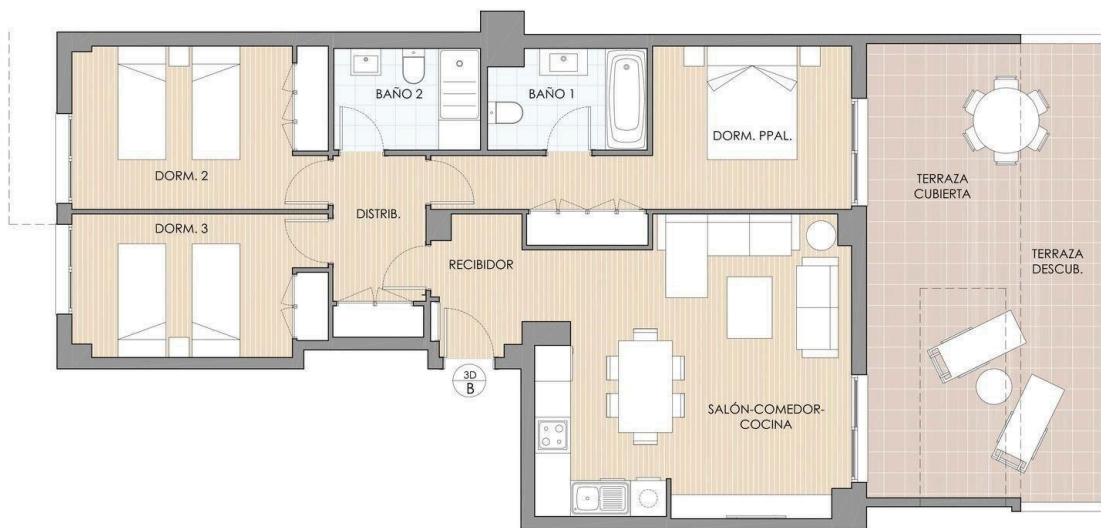
This project is designed with sustainability in mind, incorporating bioclimatic architecture to promote energy efficiency and environmental preservation. Features such as aérothermal systems for heating, cooling, and hot water production ensure reduced energy consumption and lower utility costs. The building's design maximizes natural light and ventilation through optimal window orientation and interior layout.

Prime Location in Águilas

Located just 300 meters from the beach, this development is perfect for those who want to enjoy the Mediterranean lifestyle. Águilas is a charming coastal town known for its crystal-clear waters, rich cultural heritage, and vibrant



Floor plans



FASE I PLANTA BAJA VIVIENDA B - 3D

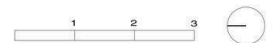
ANTEPROYECTO DE VIVIENDAS EN ALTURA, GARAJE Y PISCINA COMUNITARIA

ARQUITECTOS:

* Este documento tiene carácter de información comercial. Está sujeto a modificaciones por necesidades de obra, de obtención de licencia o las que estime en su momento la Dirección Facultativa; no siendo en consecuencia vinculante desde el punto de vista constructivo y tomando las superficies como aproximadas.

SUPERFICIES ÚTILES	
RECIBIDOR	3,3 m ²
SALÓN-COMEDOR-COCINA	25,4 m ²
DISTRIBUIDOR	4,7 m ²
BAÑO 1	4,3 m ²
BAÑO 2	4,2 m ²
DORMITORIO PRINCIPAL	13,6 m ²
DORMITORIO 2	11,6 m ²
DORMITORIO 3	10,0 m ²
TOTAL SUP. ÚTIL.	77,1 m²

SUPERFICIES EXTERIORES	
SUP. TERRAZA CUBIERTA	13,6 m ²
SUP. TERRAZA DESCUBIERTA	14,3 m ²
TOTAL SUP. CONST. + ZI.CC.	121,40 m²



Additional information

Facilities

Aircondition, Split system

Elevator

Gated complex

Gym

Pool, Private

Features

Near bus route

Distances

Sea



300 m

