

#8151

# New Construction Villas on the Frontline of Lo Romero Golf

 Pilar de la Horadada, Alicante

€479,000





# Overview

## Specifications

Bedrooms

 3

Bathrooms

 3

Covered

 111 m<sup>2</sup>

Type

**Villa**

Plot

**280 m<sup>2</sup>**

Status

**Key ready**

Energy efficiency rating

 **A**

## Description

New Construction Villas on the Frontline of Lo Romero Golf

Luxury Villas in Lo Romero Golf Resort

Discover 7 exclusive new construction villas situated on the frontline of Lo Romero Golf, offering a perfect blend of luxury, comfort, and breathtaking views of the golf course. These residences stand out for their prime location and modern architectural design, ideal for discerning buyers looking for a smart investment and an exceptional quality of life.

Modern Design with Premium Features

Each villa boasts a sophisticated, contemporary style with high-end finishes. The homes include 3 spacious bedrooms, 3 bathrooms, an open-plan kitchen connected to the living room, built-in wardrobes, and private gardens with a swimming pool. Additional features include:

Reinforced security entrance doors

Motorized blinds matching the carpentry, with thermal and acoustic insulation

Double-glazed Climalit windows with anti-breakage safety glass

Aerothermal water heating system for energy efficiency

Photovoltaic solar panels for electrical energy production

Pre-installation of ducted air conditioning

Carport with a pergola in elegant oxidized brown tones

Natural stone masonry walls separating the private gardens and the golf course

Prime Location in Pilar de la Horadada

Located in the charming Lo Romero Golf Resort, the villas enjoy a privileged setting in Pilar de la Horadada, a quintessential Spanish town in southern Costa Blanca. The 18-hole golf course is surrounded by beautiful landscapes and lies just a short drive from crystal-clear Mediterranean beaches.

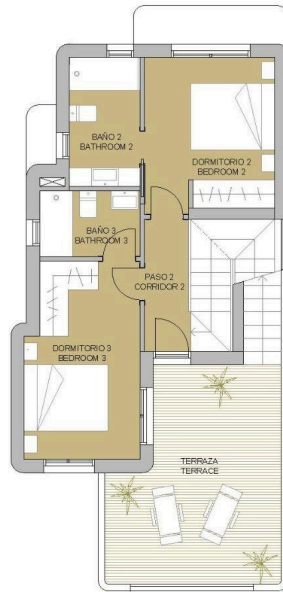


# Floor plans



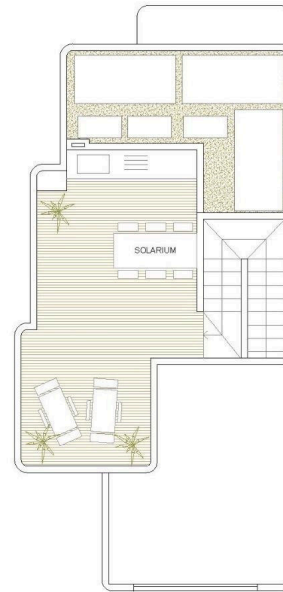
PLANTA BAJA/GROUND FLOOR

SUPERFICIES ÚTILES / OCCUPIABLE AREA	
PLANTA BAJA / GROUND FLOOR	
LIVING ROOM - KITCHEN	36.11 m <sup>2</sup>
DORMITORIO 1 / BEDROOM 1	11.16 m <sup>2</sup>
BAÑO 1 / BATHROOM 1	3.73 m <sup>2</sup>
PASILLO 1 / CORRIDOR 1	1.47 m <sup>2</sup>



PLANTA PRIMERA/FIRST FLOOR

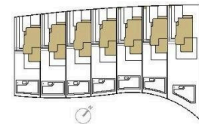
PLANTA PRIMERA / FIRST FLOOR	
DORMITORIO 2 / BEDROOM 2	10.25 m <sup>2</sup>
BAÑO 2 / BATHROOM 2	4.48 m <sup>2</sup>
PASILLO 2 / CORRIDOR 2	3.15 m <sup>2</sup>
DORMITORIO 3 / BEDROOM 3	11.23 m <sup>2</sup>
BAÑO 3 / BATHROOM 3	3.42 m <sup>2</sup>



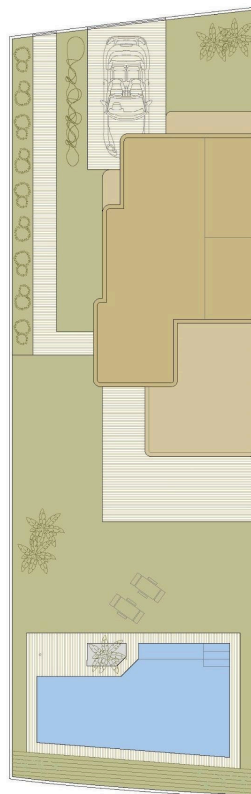
SOLARIUM

## VIVIENDA TIPO

TERRAZA / TERRACE	17.22 m <sup>2</sup>
SOLARIUM	24.00 m <sup>2</sup>
SUPERFICIES CONST. / BUILT AREA	
SUP. CERRADA / CLOSED AREA	112.00 m <sup>2</sup>
CLOSED AREA + TERRACE + SOLARIUM	153.22 m <sup>2</sup>
FARCELA / PLOT	..... m <sup>2</sup>



PLANO SUJETO A MODIFICACIONES DE ÍNDOLE TÉCNICA O JURÍDICA. LAS SUPERFICIES SON APROXIMADAS / PLAN SUBJECT TO POSSIBLE MODIFICATIONS FOR TECHNICAL OR LEGAL REASONS. THE MEASUREMENTS SHOWN ARE APPROXIMATE



## VIVIENDA TIPO V.1

SUPERFICIES ÚTILES / OCCUPIABLE AREA	
PLANTA BAJA / GROUND FLOOR	36.11 m <sup>2</sup>
DORMITORIO 1 / BEDROOM 1	11.16 m <sup>2</sup>
BAÑO 1 / BATHROOM 1	3.73 m <sup>2</sup>
PASILLO 1 / CORRIDOR 1	1.47 m <sup>2</sup>
PLANTA PRIMERA / FIRST FLOOR	
DORMITORIO 2 / BEDROOM 2	10.25 m <sup>2</sup>
BAÑO 2 / BATHROOM 2	4.48 m <sup>2</sup>
PASILLO 2 / CORRIDOR 2	3.15 m <sup>2</sup>
DORMITORIO 3 / BEDROOM 3	11.23 m <sup>2</sup>
BAÑO 3 / BATHROOM 3	3.42 m <sup>2</sup>
TERRAZA / TERRACE	17.22 m <sup>2</sup>
SOLARIUM	24.00 m <sup>2</sup>
SUPERFICIES CONST. / BUILT AREA	
SUP. CERRADA / CLOSED AREA	112.00 m <sup>2</sup>
CLOSED AREA + TERRACE + SOLARIUM	153.22 m <sup>2</sup>
FARCELA / PLOT	380.04 m <sup>2</sup>

0 1 5 10

PLANO SUJETO A MODIFICACIONES DE ÍNDOLE TÉCNICA O JURÍDICA. LAS SUPERFICIES SON APROXIMADAS / PLAN SUBJECT TO POSSIBLE MODIFICATIONS FOR TECHNICAL OR LEGAL REASONS. THE MEASUREMENTS SHOWN ARE APPROXIMATE



# Additional information

## Facilities

Aircondition, Provision

Gated complex

Pool, Private

## Features

Garden

Golf course

## Distances

Sea

 7 km

