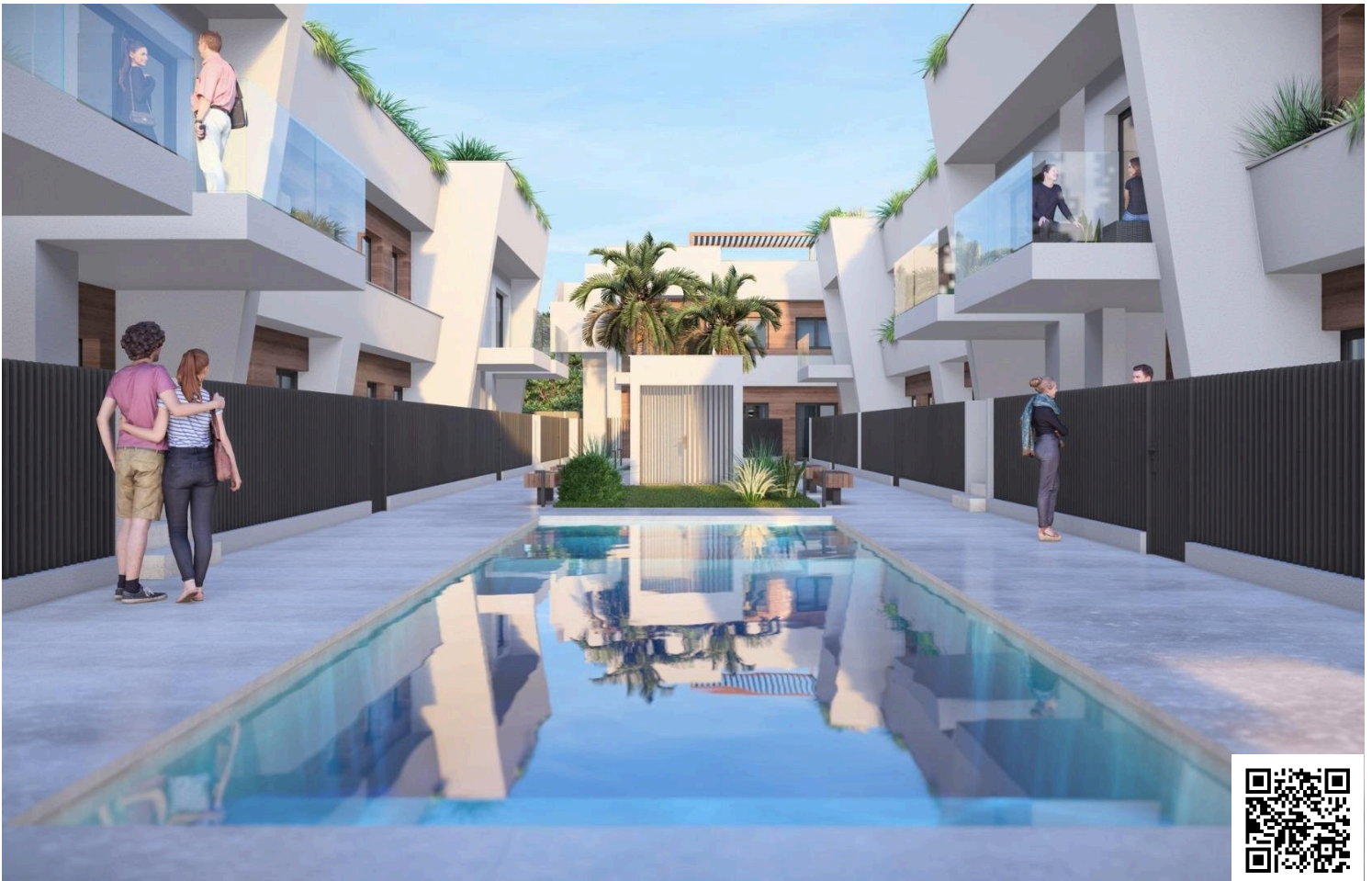


#8178

New Construction Homes in Torre-Pacheco, Costa Cálida

 Torre Pacheco, Murcia

€220,000





Overview

Specifications

Bedrooms



2

Bathrooms



2

Covered



68 m²

Type

Bungalow

Uncovered veranda

77 m²

Status

Key ready

Energy efficiency rating



Description

New Construction Homes in Torre-Pacheco, Costa Cálida
Modern Bungalows with Exceptional Features
Discover a new residential complex in Torre-Pacheco, offering 24 stylish bungalows with 2 or 3 bedrooms. Choose between ground-floor homes with spacious terraces or first-floor units boasting private terraces and solariums. Each solarium includes a pergola, a barbecue area, and reinforced roofing, perfect for installing a jacuzzi. All homes come with a designated parking space and fully installed air conditioning, ensuring comfort year-round.

Prime Location in Torre-Pacheco
Nestled in the heart of Torre-Pacheco, this development enjoys proximity to essential amenities, including supermarkets, shops, bars, and restaurants. The vibrant town center, with its charming Spanish ambiance, is within walking distance. For beach lovers, the stunning Mar Menor is just a 10-minute drive away, offering golden sands and crystal-clear waters.

Enjoy Outstanding Community Amenities
The complex features a beautifully landscaped community area with lush gardens and a sparkling pool, providing a serene retreat to relax and unwind. The area's sunny climate, averaging 320 days of sunshine annually, complements these outdoor spaces perfectly.

Surrounded by Award-Winning Golf Courses
Torre-Pacheco is a golfer's paradise, surrounded by some of the most renowned golf courses in Spain. These courses are just a short drive away, making it an ideal location for golf enthusiasts.

Strategic Connections to Key Destinations
Murcia International Airport: 20 km (approximately 20 minutes by car).
Train Station: Only 700 meters away, offering convenient travel options.
Shopping Centers: Several large shopping complexes within a 15 km radius.
Beaches: The beautiful Costa Cálida beaches are a mere 10 km away.
Ports and Marinas: The closest marina is around 12 km away, perfect for boating and water sports.

A Healthier Lifestyle Awaits
The Costa Cálida region is renowned for its exceptional quality of life. With low humidity, clean air, and a subtropical climate, this area is one of the healthiest in Spain. The perfect combination of natural beauty, sea breezes, and abundant sunlight makes Torre-Pacheco a highly sought-after destination.

Act Now to Secure Your Dream Home
Don't miss this opportunity to own a modern home in a prime location. Contact us today to learn more about this incredible development or to schedule a viewing!



Floor plans

SUPERFICIES ÚTILES PLANTA PRIMERA F

Salón-Comedor-Cocina	25,75 m ²
Dormitorio 1	10,00 m ²
Dormitorio 2	13,00 m ²
Distribuidor	2,30 m ²
Baño 1	3,50 m ²
Baño 2	3,90 m ²
TOTAL	58,45 m²

Terraza	7,40 m ²
Solarium	70,35 m ²

Vivienda P1-F



Solarium P1-F



SUPERFICIES ÚTILES PLANTA BAJA

PB-A	78,72 m ²
PB-B	68,70 m ²
PB-C	67,05 m ²
PB-D	67,05 m ²
PB-E	67,05 m ²
PB-F	63,00 m ²
PB-G	78,72 m ²
PB-H	68,70 m ²
PB-I	67,05 m ²
PB-J	67,05 m ²
PB-K	67,05 m ²
PB-L	63,30 m ²

Vestuario hombres	4,40 m ²
Vestuario mujeres	8,60 m ²
RITU	1,30 m ²
Instalaciones	2,35 m ²
TOTAL	840,09 m²

Urbanización parcela	512,15 m ²
Piscina	54,00 m ²
TOTAL Sup. Construida.	1.139,79 m²



PLANTA BAJA



Additional information

Facilities

Aircondition, Split system

Gated complex

Parking, Uncovered

Pool, Communal

Features

Barbeque

Near bus route

Distances

Sea



11 km

