

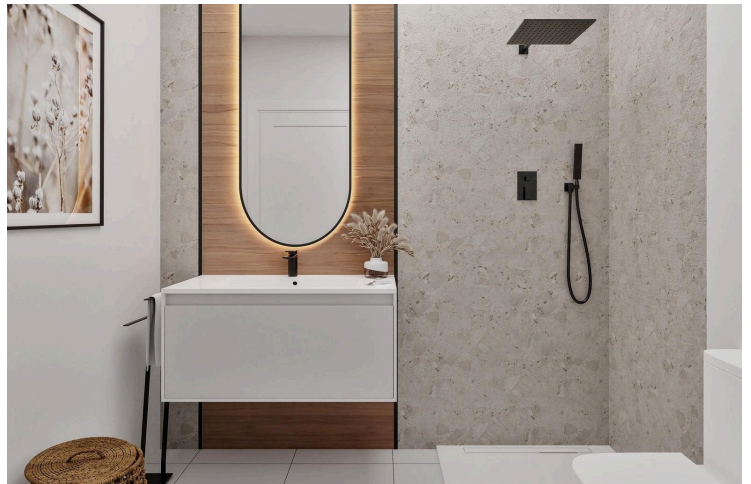
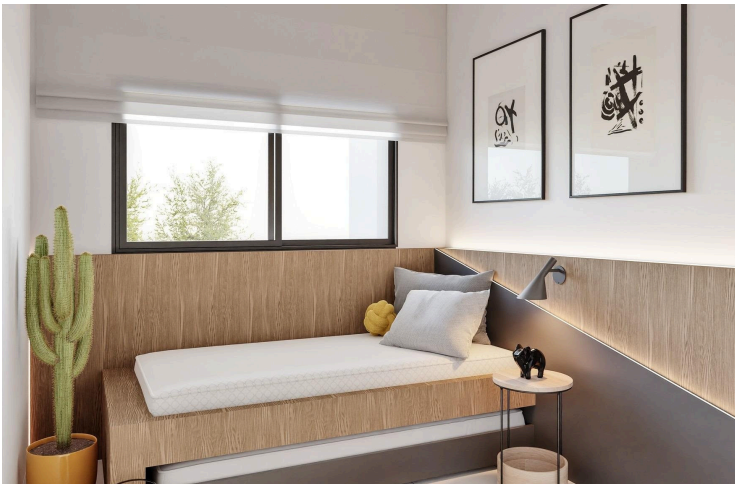
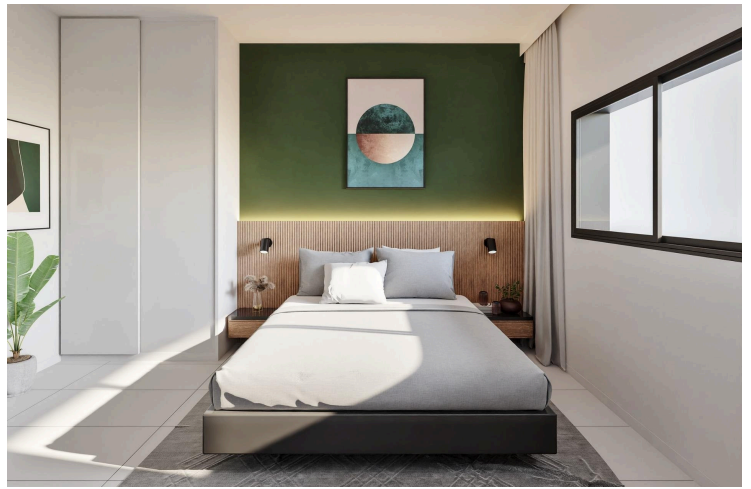
#8184

Discover Modern Living at the New Residential Development in San Miguel de Salinas

 San Miguel de Salinas, Alicante

€189,900





Overview

Specifications

Bedrooms



Bathrooms



Covered

65 m²

Type

Apartment

Status

Key ready

Energy efficiency rating



Description

Discover Modern Living at the New Residential Development in San Miguel de Salinas

Spacious Apartments with Stunning Amenities

This new construction residential complex in San Miguel de Salinas offers contemporary 2- and 3-bedroom apartments with expansive terraces, thoughtfully distributed across seven floors. The gated community provides top-notch facilities, including separate swimming pools for adults and children, lush green areas, a children's playground, and an adult wellness zone with a biosaludable circuit.

Prime Location on the Costa Blanca

Nestled in the charming town of San Miguel de Salinas, this development enjoys a strategic location on the Costa Blanca. It's within walking distance of the town center, where you'll find all the essential services for daily living, including shops, restaurants, and healthcare facilities.

The property is a short drive from several points of interest:

Las Colinas and Campoamor Golf Courses: Just 7 km away, perfect for golf enthusiasts.

Beaches of Orihuela Costa and Torrevieja: Located approximately 10 km from the residence, offering beautiful sandy shores.

Shopping Centers: Zenia Boulevard, a popular shopping destination, is only 9 km away.

Alicante Airport: A convenient 50 km drive.

Murcia Corvera Airport: About 55 km away, ideal for regional connections.

High-Quality Specifications

Each apartment is designed with modern finishes and functionality in mind:

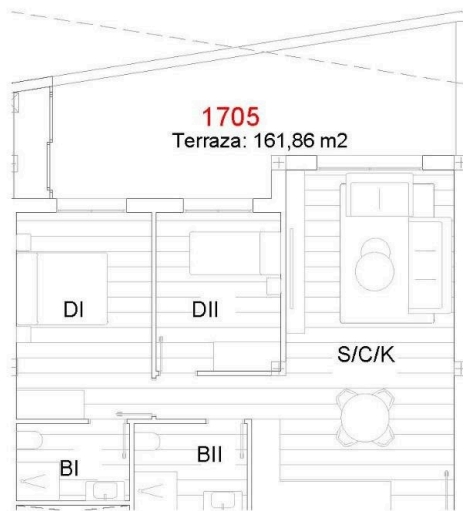
Fully equipped kitchens with induction cooktops and extractor hoods.

Porcelain tile flooring throughout.

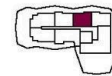
Compact roller shutters for added privacy and convenience.



Floor plans



VIVIENDA 1705	
Baño I	4,46 m ²
Baño II	4,9 m ²
Dormitorio I	13,99 m ²
Dormitorio II	9,81 m ²
S/C/K	32,27 m ²
Terraza cubierta	22,29 m ²
Terraza descubierta	3,52 m ²
Lavadero	2,21 m ²
TOTAL	93,45 m²



Nº 1705

P7



e: 1/100

Los datos referidos a superficies son meramente orientativos y pueden sufrir variaciones como consecuencia de exigencias comerciales, jurídicas, técnicas o de ejecución de proyecto.



Additional information

Facilities

Aircondition, Provision

Elevator

Gated complex

Pool, Private

Distances

Sea

 10 km

