

#8225

New Villas for Sale in Torrevieja – 2 km from the Sea

 Torrevieja, Alicante

€595,000





Overview

Specifications

Bedrooms

 3

Bathrooms

 2

Covered

 141 m²

Type

Villa

Plot

247 m²

Status

Key ready

Energy efficiency rating

 **B**

Description

New Villas for Sale in Torrevieja – 2 km from the Sea

Discover these stunning new villas located in the sought-after area of Torrevieja, just 2 km from the Mediterranean coast. Offering the perfect blend of luxury, comfort, and practicality, these 3-bedroom, 2-bathroom homes are designed for those who seek a sophisticated lifestyle with all the benefits of coastal living.

Spacious Design and High-Quality Finishes

These one-story villas have been thoughtfully designed for maximum comfort and ease of living. With an open-plan layout, they provide ample space for relaxation and entertainment. The villas feature high-quality finishes including thermal break aluminum windows, Climalit double glazing, and pre-installation for ducted air conditioning. For added convenience, the homes include electric shutters, modern bathrooms with resin shower trays and built-in black faucets, and private parking in the underground garage with additional storage space.

Private Pool and Solarium with Stunning Views

Step outside to your private oasis, where you can enjoy the luxury of a private pool in your own garden. From the rooftop solarium, take in the breathtaking views of the La Mata Salt Lagoon and the surrounding area, and enjoy spectacular sunsets each evening. The property is situated in the highest part of Torrevieja, ensuring both privacy and impressive vistas.

Exclusive Community Amenities

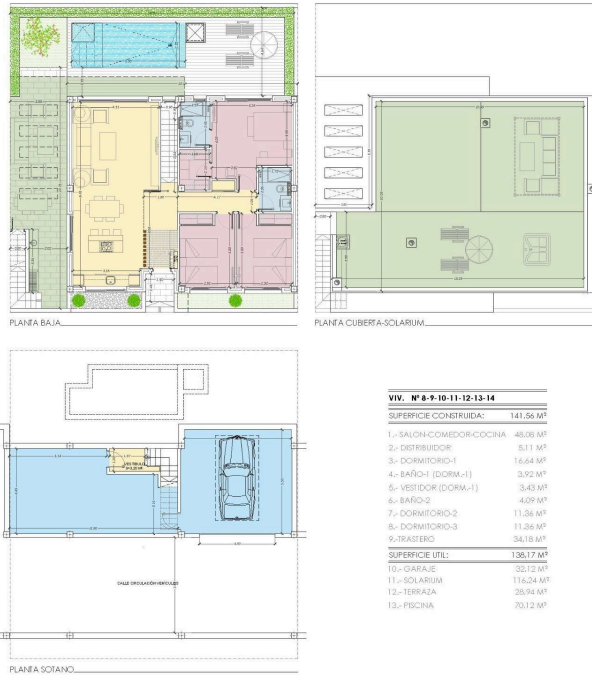
The development offers several communal amenities, including landscaped garden areas, a calisthenics circuit, and a petanque area, perfect for both relaxation and recreation. Whether you're enjoying time alone or socializing with neighbors, this villa provides the perfect environment for both peaceful living and vibrant community interaction.

Prime Location in Torrevieja

These villas are surrounded by essential services and recreational options. The Alicante-Elche Airport is just 45

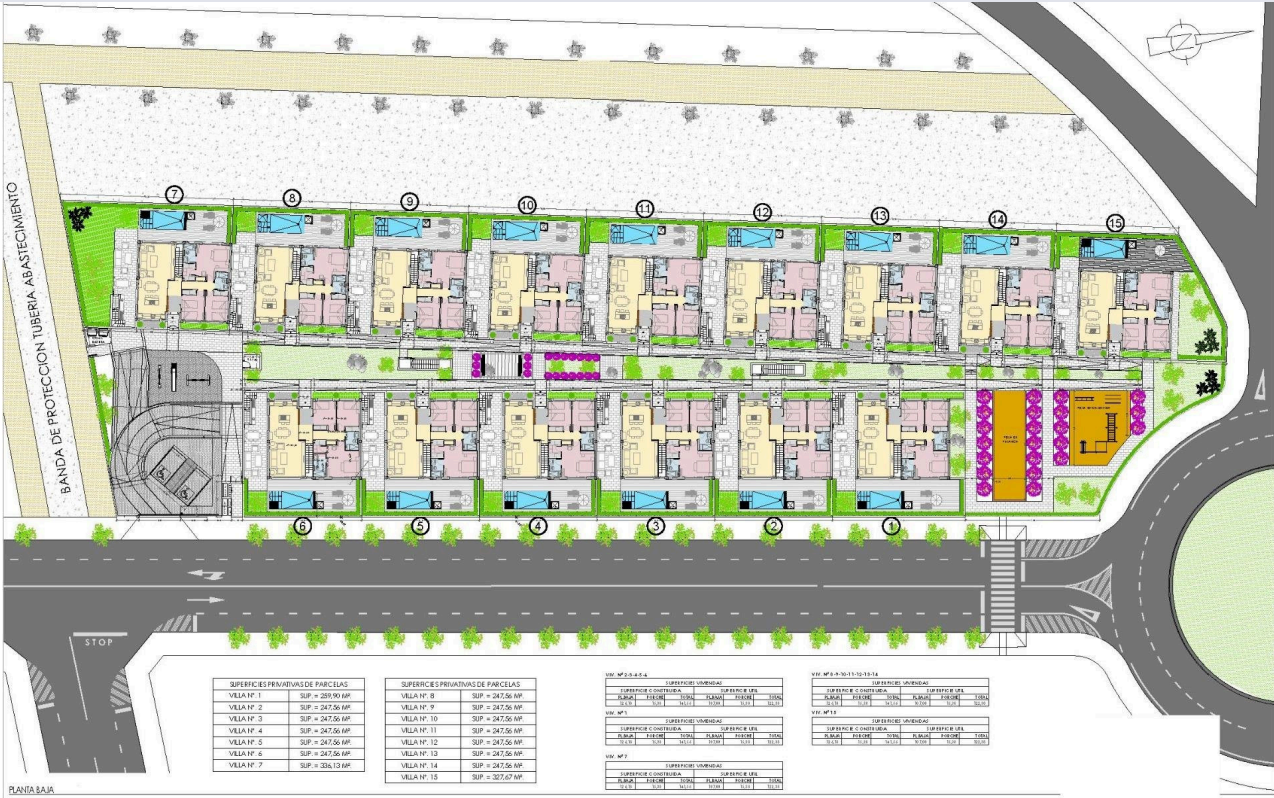
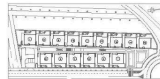


Floor plans



VIV. Nº 8-9-10-11-12-13-14

SUPERFICIE CONSTRUIDA:	141,56 M ²
1.- SALON-COMEDOR-COCINA	45,08 M ²
2.- DISTRIBUIDOR	5,11 M ²
3.- DORMITORIO-1	1,64 M ²
4.- BAÑO-1 (DORM-1)	3,92 M ²
5.- VESTIDOR (DORM-1)	3,43 M ²
6.- BAÑO-2	4,09 M ²
7.- DORMITORIO-2	11,36 M ²
8.- DORMITORIO-3	11,26 M ²
9.- PASILLO	24,15 M ²
SUPERFICIE UTIL	130,17 M ²
10.- GARAJE	33,12 M ²
11.- SOLARIUM	116,24 M ²
12.- TERRAZA	25,94 M ²
13.- PISCINA	70,12 M ²



SUPERFICIES PRIVATIVAS DE PARCELAS

VILLA Nº 1	SUP. = 289,90 MP
VILLA Nº 2	SUP. = 247,56 MP
VILLA Nº 3	SUP. = 247,56 MP
VILLA Nº 4	SUP. = 247,56 MP
VILLA Nº 5	SUP. = 247,56 MP
VILLA Nº 6	SUP. = 247,56 MP
VILLA Nº 7	SUP. = 336,13 MP

SUPERFICIES PRIVATIVAS DE PARCELAS

VILLA Nº 8	SUP. = 247,56 MP
VILLA Nº 9	SUP. = 247,56 MP
VILLA Nº 10	SUP. = 247,56 MP
VILLA Nº 11	SUP. = 247,56 MP
VILLA Nº 12	SUP. = 247,56 MP
VILLA Nº 13	SUP. = 247,56 MP
VILLA Nº 14	SUP. = 247,56 MP
VILLA Nº 15	SUP. = 327,67 MP

VIV. Nº 8-9-10-11-12-13-14

SUPERFICIES UNIDADES		SUPERFICIES UNIDADES	
SUPERFICIE CONSTRUIDA	SUPERFICIE UTIL	SUPERFICIE CONSTRUIDA	SUPERFICIE UTIL
PARCELAS	ESTRUCT.	PARCELAS	ESTRUCT.
100%	100%	100%	100%

VIV. Nº 5-6-7-8-9-10-11-12-13-14

SUPERFICIES UNIDADES		SUPERFICIES UNIDADES	
SUPERFICIE CONSTRUIDA	SUPERFICIE UTIL	SUPERFICIE CONSTRUIDA	SUPERFICIE UTIL
PARCELAS	ESTRUCT.	PARCELAS	ESTRUCT.
100%	100%	100%	100%



Additional information

Facilities

Aircondition, Provision

Gated complex

Pool, Private

Features

Garden

Near bus route

Distances

Sea

 1.8 km

