

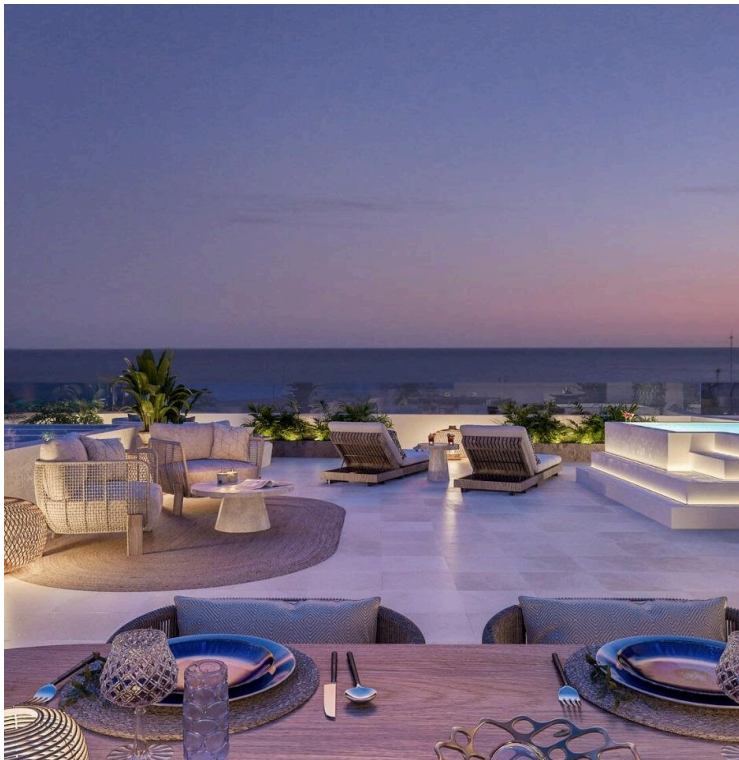
#8240

Luxury Resort in Villajoyosa – A Seaside Paradise

 Villajoyosa, Alicante

€438,000





Overview

Specifications

Bedrooms

 2

Bathrooms

 2

Covered

 95 m²

Type

Apartment

Plot

38 m²

Status

Key ready

Energy efficiency rating

 **A**

Description

Luxury Resort in Villajoyosa – A Seaside Paradise

Discover a Unique Residential Complex in Playa del Torres

Located less than a 5-minute walk from the serene Playa del Torres in Villajoyosa, this exclusive new development offers 164 modern apartments and penthouses with 1 to 3 bedrooms. Designed to provide the ultimate lifestyle, the community combines luxury, relaxation, and unparalleled amenities in a tranquil Mediterranean setting.

Exceptional Amenities for All Residents

The heart of this development is the Roof Top, situated on the rooftop of Block 2. This thoughtfully designed space includes a stunning pool with panoramic views, Chill-out areas, a barbecue zone, a multi-use area, and a gazebo, perfect for socializing or unwinding.

Indoor social lounge, ideal for gourmet dining with friends or as a coworking space.

For water lovers, the complex features:

Tropical-style pools with beach-style access.

A heated swimming lane pool, a children's pool, and a heated jacuzzi.

Fitness enthusiasts can enjoy:

Indoor and outdoor gyms, complete with a calisthenics circuit.

A putting green and mini golf for leisure activities.

Modern Homes with Premium Features

Each apartment is equipped with:

A fully fitted kitchen with high-quality appliances, including a refrigerator, microwave, oven, dishwasher, and an integrated washer/dryer.

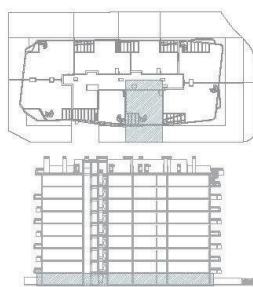
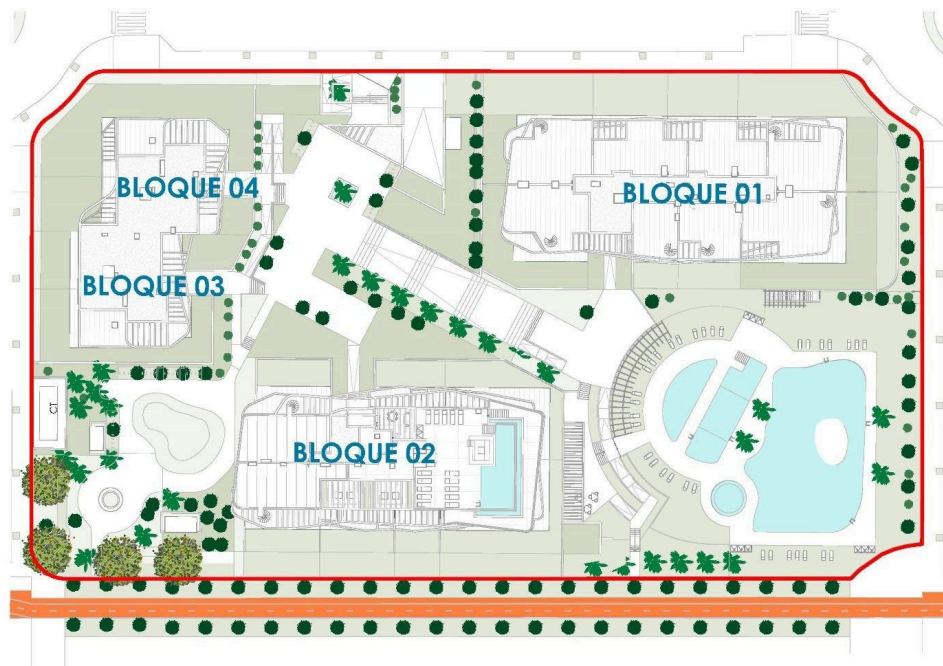
Energy-efficient aerothermal systems for hot water and air conditioning.

Radiant floor heating in bathrooms.

High-quality PVC windows with thermal insulation and double glazing.



Floor plans



VIVIENDA 1.0.7

BLOQUE 1 PLANTA BAJA

SUPERFICIES	
Superficie Construida Vivienda	67,81 m ²
Superficie Construida Terraza	28,50 m ²
Superficie Construida Total	96,31 m²
Superficie Construida ppZC	103,80 m ²
Superficie Jardín	38,02 m ²
Superficie útil total	141,82 m²



Documento no Contracted ni Vinculante. La información y material gráfico que aparece en él son únicamente una representación preliminar, no tienen valor contractual y por lo tanto pueden experimentar modificaciones por causas técnicas, legales, de seguridad o de otro tipo. La información y material gráfico que aparece en él son únicamente una representación preliminar, no tienen valor contractual y por lo tanto pueden experimentar modificaciones por causas técnicas, legales, de seguridad o de otro tipo.

Rough illustrative information, conceptual graphics and all the graphic documentation that appear in this brochure are merely indicative, none is contractual value and are experimental due to technical, legal or other requirements of the Project Management. The gardening, decoration and furniture are merely decorative and not binding.

V01-NOVEMBER2024



Additional information

Facilities

Aircondition, Split system

Elevator

Gated complex

Gym

Parking, Uncovered

Pool, Private

Features

Garden

Jacuzzi

Distances

Sea

 400 m

