

#8301

New Build Bungalows with Sea Views in La Mata, Torrevieja

 Torrevieja, Alicante

€620,000





Overview

Specifications

Bedrooms

 2

Bathrooms

 2

Covered

 151 m²

Type

Bungalow

Status

Key ready

Energy efficiency rating

 **A**

Description

New Build Bungalows with Sea Views in La Mata, Torrevieja

Privileged Location 300 Metres from the Beach

This exclusive new development is located in La Mata, Torrevieja, one of the most sought after areas of the Costa Blanca. Just 300 metres from the beach, this development offers an exceptional natural setting with panoramic sea views and easy access to all essential amenities.

La Mata is a vibrant area with a special charm, surrounded by promenades, restaurants, cafés and supermarkets, making it the perfect destination for both year-round living and enjoying a second home by the sea.

Modern Design and Energy Efficiency

This development stands out for its elegant Mediterranean architecture with an avant-garde touch. Designed under the Passivhaus standard, it guarantees a sustainable construction that provides maximum thermal comfort and energy efficiency, reducing consumption and environmental impact.

The homes feature high quality finishes, spacious rooms and abundant natural light, achieving a perfect balance between design and functionality.

Housing Options for All Lifestyles

Ground floor flats with a large private garden with sea views and enough space for a private swimming pool. They also include a semi-basement with the possibility of adding additional bedrooms.

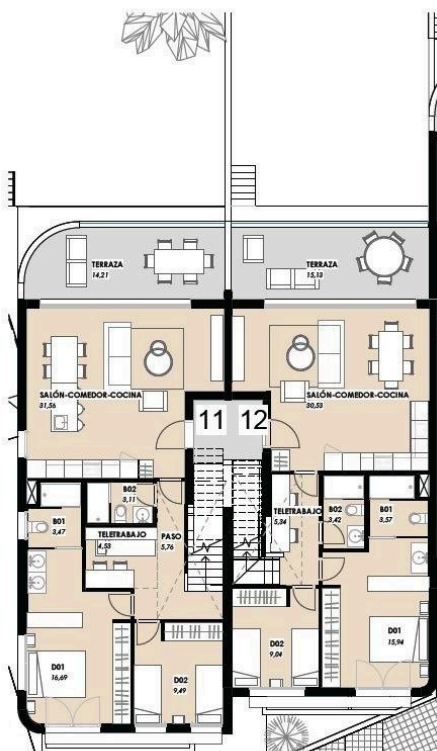
Top floor flats with large balcony, private solarium and spectacular sea views, perfect for enjoying the Mediterranean sun.

Exclusive Communal Areas

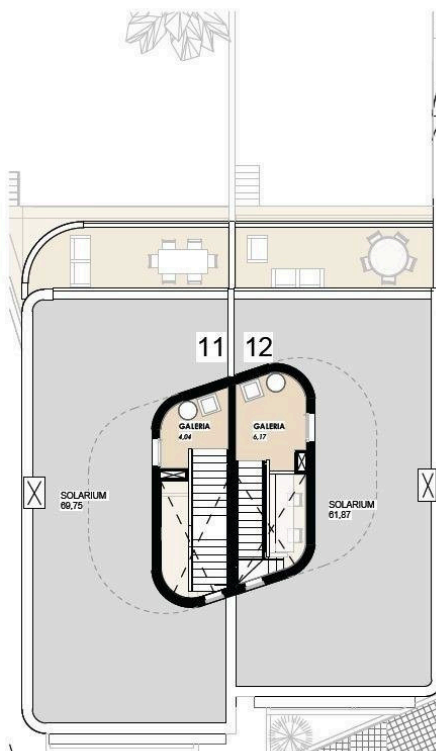
This development offers spaces designed for comfort and relaxation:



Floor plans

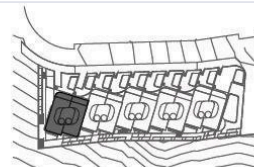


VIVIENDA 11-12_PLANTA PRIMERA/ APARTMENT 11-12_TOP FLOOR
1: 100



VIVIENDA 11-12_SOLARIUM/ APARTMENT 11-12_SOLARIUM
1: 100

Plano sujeto a posibles modificaciones por razones o exigencias de índole técnica y jurídica
Floor plan opened to modifications for technical or legal reasons

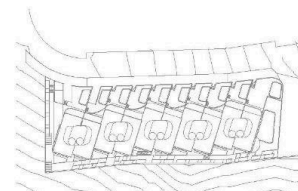


VIVIENDA 11 - PRIMERA PLANTA Y SOLARIUM / APARTMENT 11 - TOP FLOOR AND SOLARIUM	(m²)
SUPERFICIE ÚTIL INTERIOR VIVIENDA USEFUL INTERIOR AREA APARTMENT	78,65
PLANTA PRIMERA / TOP FLOOR	74,62
GALERÍA / GALLERY	4,04
SUPERFICIE EXTERIOR VIVIENDA USEFUL EXTERIOR AREA APARTMENT	83,96
TERRAZA / BALCONY	14,21
SOLARIUM / SOLARIUM	69,75
TOTAL SUPERFICIES VIVIENDA 11 TOTAL AREA APARTMENT 11	162,61

VIVIENDA 12 - PLANTA PRIMERA Y SOLARIUM / APARTMENT 12 - TOP FLOOR AND SOLARIUM	(m²)
SUPERFICIE ÚTIL INTERIOR VIVIENDA USEFUL INTERIOR AREA APARTMENT	74,01
PLANTA PRIMERA / TOP FLOOR	67,84
GALERÍA / GALLERY	6,17
SUPERFICIE EXTERIOR VIVIENDA USEFUL EXTERIOR AREA APARTMENT	77,00
TERRAZA / BALCONY	13,22
SOLARIUM / SOLARIUM	61,87
TOTAL SUPERFICIES VIVIENDA 12 TOTAL AREA APARTMENT 12	151,01



PLANTA BAJA / GROUND FLOOR



Additional information

Facilities

Aircondition, Provision

Gated complex

Parking, Uncovered

Pool, Private

Features

Near bus route

Sea view

Distances

Sea

 300 m

