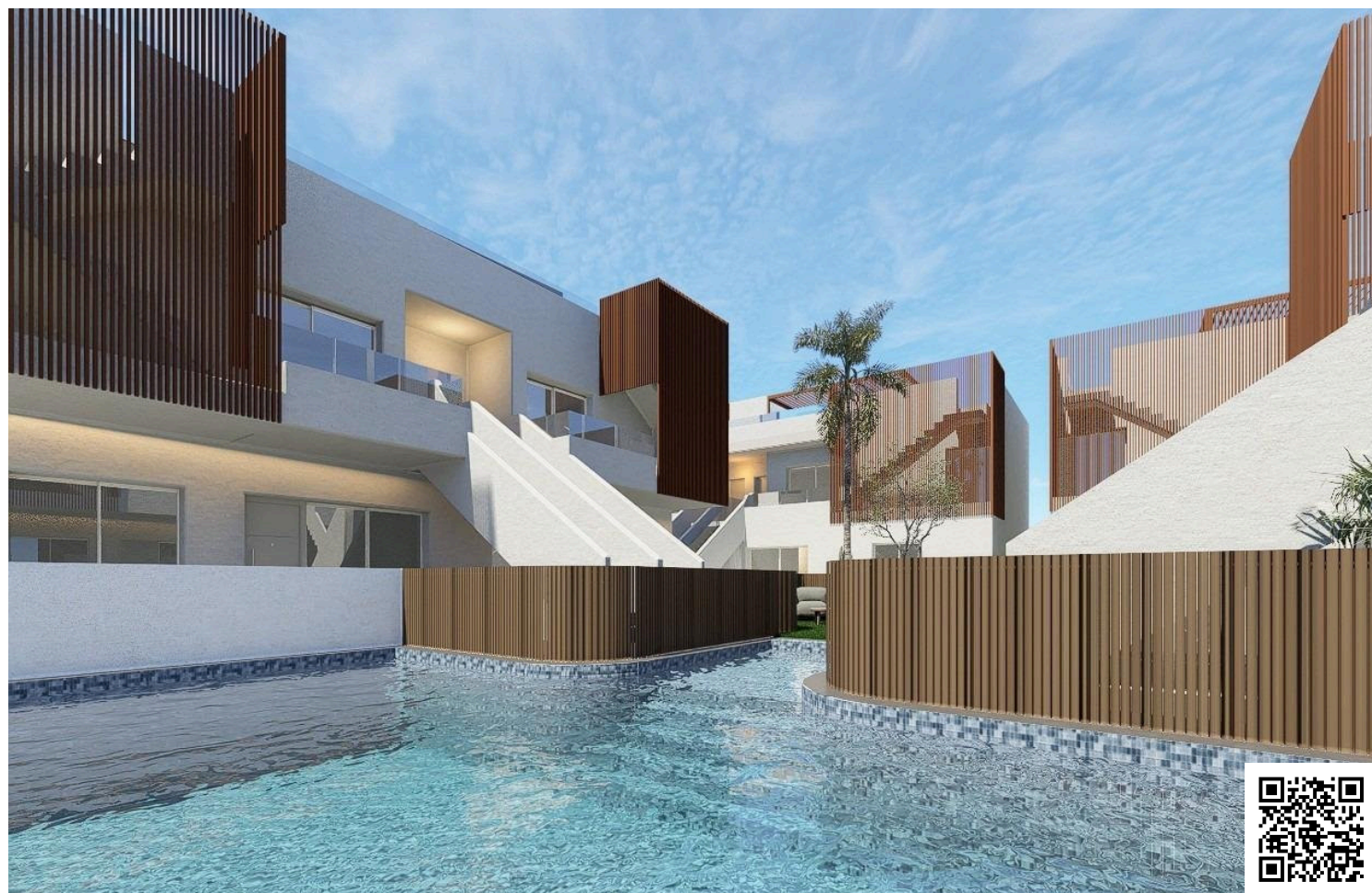


#8407

New Build Bungalows with Comunal Pool in Pilar de la Horadada – Costa Blanca South

 Pilar de la Horadada, Alicante

€249,000





Overview

Specifications

Bedrooms

 3

Bathrooms

 2

Covered

 89 m²

Type

Bungalow

Plot

98 m²

Status

Key ready

Energy efficiency rating

 **B**

Description

New Build Bungalows with Comunal Pool in Pilar de la Horadada – Costa Blanca South

Modern Residences Close to the Beach and Town Centre

Discover this exclusive new development of 16 modern bungalows located in Pilar de la Horadada, a charming town in the southernmost part of the Costa Blanca. The residential complex offers properties with 2 or 3 bedrooms and 2 fully equipped bathrooms, designed to combine comfort, functionality, and Mediterranean style.

The development is situated just 3.5 km from the beaches of Torre de la Horadada, and within walking distance to the town centre, where you'll find supermarkets, restaurants, shops, and all essential services.

Premium Features and Functional Design

Each bungalow is built with quality materials and designed for year-round living or holiday enjoyment. Key features include:

Ground floor units with private garden

Top floor units with private solarium and summer kitchen

Fully furnished kitchen with appliances included

Fitted wardrobes with drawers

Modern bathrooms with Rain-effect showers, mirrors, and screens

Pre-installed ducted air conditioning

110-litre atherothermal hot water system for energy efficiency

Outdoor and indoor lighting (excluding decorative fixtures)

Aluminium exterior carpentry with thermal break and double glazing

Assigned parking space for each unit

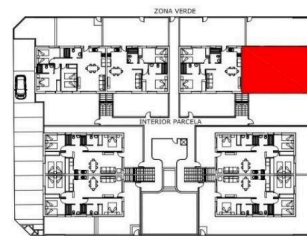
Communal swimming pool for residents



Floor plans

VIVIENDA Nº4

ESQUEMA PLANTA BAJA



CUADRO DE SUPERFICIE CONSTRUIDA

VIVIENDA 4	SUPERFICIE CONSTRUIDA m2
PORCHE	10,66m²
TOTAL VIVIENDA	89,48m²
JARDÍN	98,00m²

Note: Este plano es orientativo y carece de valor contractual. Puede estar sujeto a modificaciones y sufrir variaciones por necesidades técnicas durante el desarrollo del proyecto y basado en la evolución de la obra. El amueblamiento descrito es a título indicativo, no estando incluido en el precio. Solo se incluyen los elementos descritos en la memoria de calidades del Proyecto visado.

Note: This plan is indicative and has no contractual value. It may be subject to modifications and may undergo variations due to technical needs during the development of the project and based on the evolution of the work. The furnishings shown are indicative only and are not included in the price. Only the elements described in the quality specifications of the approved project are included.

Note: This plan is indicative and has no contractual value. It may be subject to modifications and may undergo variations due to technical needs during the development of the project and based on the evolution of the work. The furnishings shown are indicative only and are not included in the price. Only the elements described in the quality specifications of the approved project are included.

PLANO GENERAL PLANTA BAJA

ZONA VERDE



Nota: Este plano es orientativo y carece de valor contractual. Puede estar sujeto a modificaciones y sufrir variaciones por necesidades técnicas durante el desarrollo del proyecto y basado en la evolución de la obra. El amueblamiento dibujado es a título indicativo, no estando incluido en el precio. Solo se incluyen los elementos descritos en la memoria de calidades del Proyecto visado.

Note: This plan is indicative and has no contractual value. It may be subject to modifications and may undergo variations due to technical needs during the development of the project and based on the evolution of the work. The furnishings shown are indicative only and are not included in the price. Only the elements described in the quality specifications of the approved project are included.



Additional information

Facilities

Aircondition, Provision

Gated complex

Parking, Uncovered

Pool, Private

Features

Garden

Near bus route

Distances

Sea

 3.5 km

