

#8455

# New Build Homes in La Canalosa with Communal Pool

 Hondón de las Nieves, Alicante

€139,900







# Overview

## Specifications

Bedrooms

 2

Bathrooms

 1

Covered

 59 m<sup>2</sup>

Type

**Bungalow**

Plot

**10 m<sup>2</sup>**

Status

**Key ready**

Energy efficiency rating

 **B**

## Description

New Build Homes in La Canalosa with Communal Pool

Rural Tranquillity with Modern Amenities

Welcome to this exclusive residential development in La Canalosa, a charming hamlet in Hondón de las Nieves, Alicante. This new-build development offers a peaceful lifestyle surrounded by nature, with all the amenities you need to enjoy everyday life. With a total of 8 homes with 2 bedrooms and 1 bathroom, it is the ideal option for those seeking peace, comfort and connection with the natural environment.

Property Types to Suit All Tastes

The ground floor properties have front terraces and rear patios, and three of them offer space to park your car within the private plot. The upper floor properties have a private solarium with storage room, ideal for enjoying the sun all year round and the excellent Mediterranean climate that characterises the area.

Specifications and Features

Each home has been designed with a practical and modern approach:

Pre-installation of ducted air conditioning

Security entrance door

Bathroom cabinet with mirror

High-quality exterior carpentry

The residential complex also has a communal swimming pool surrounded by landscaped areas, perfect for relaxing and enjoying time with the family.

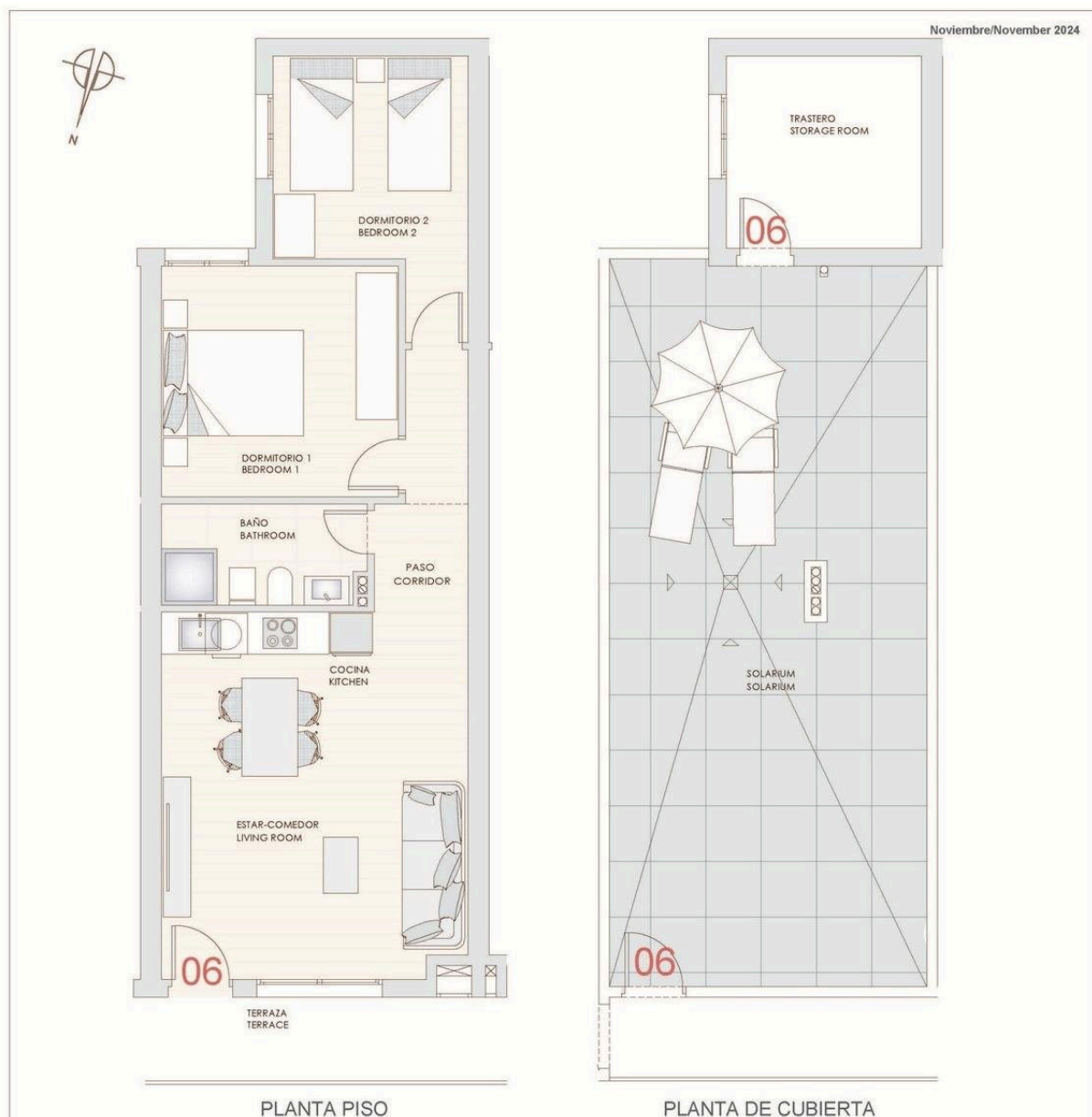
Natural surroundings and healthy lifestyle

La Canalosa is the ideal destination for those who value a simple, healthy lifestyle surrounded by nature. Its rural





# Floor plans



Superficies útiles interiores Indoor occupiable area	
TIPO / TYPE	06
Paso / Corridor	4.05
Estar-comedor-Cocina	22.90
Dormitorio 1 / Bedroom 1	11.20
Dormitorio 2 / Bedroom 2	9.20
Baño / Bathroom	4.20
Terraza / Terrace (50%)	-
Trastero / Storage room	7.70
<b>Superficie útil total Total occupiable area</b>	<b>59.2</b>

## VIVIENDA TIPO 06

ESCALA: 1/80

Superficies útiles exteriores Outdoor occupiable area	
Jardin / Garden	-
Solarium	47.00
Patio / Courtyard	-
<b>Superficie total Total area</b>	<b>106.2</b>

Superficies construidas Built area	
Vivienda / Apartment	59.55
Zonas comunes / Common areas	5.08
Trastero / Storage room	10.40
<b>Superficie construida total Total built area</b>	<b>75.0</b>

Plano sujeto a posibles modificaciones por razones o exigencias de índole técnica o jurídica. Las superficies son aproximadas: cocina y amueblamiento orientativos, sin valor contractual

Plans subject to possible modifications for technical or legal reasons. The measurements shown are approximate. Kitchen and furnishings are for display purposes only, without any contractual value



# Additional information

## Facilities

Aircondition, Provision

Gated complex

Pool, Private

## Features

Veranda

## Distances

Sea

 35 km

