

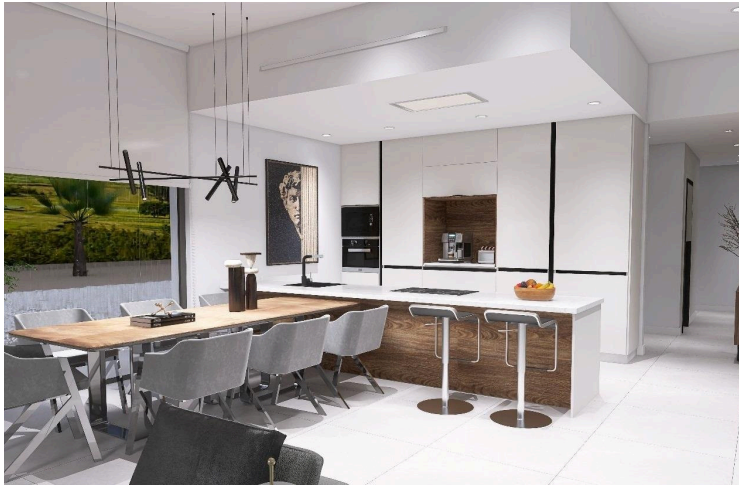
#8522

Newly built villas located in the municipality of Aspe.

 Aspe, Alicante

€463,000





Overview

Specifications

Bedrooms



4

Bathrooms



3

Covered

248 m²

Type

Villa

Plot

13172 m²

Status

Key ready

Energy efficiency rating



Description

Newly built villas located in the municipality of Aspe.

Newly built villas with several models to choose from, with 2, 3 or 4 bedrooms, on one or two floors and built with slabs or with a structure: depending on the model and the plot chosen, the exact price will be calculated.

All the villas are built on rustic plots of over 10,000 m², of which around 2,500 m² will be fenced off.

The villas have an open-plan kitchen with living room, built-in wardrobes, private swimming pool, porch, storage room and outdoor parking space.

There are several plots to choose from. The price is based on a plot priced at £77,500 (if another plot is chosen, the difference will be paid or credited according to the price of the plot).

Self-build project, delivery in approximately 12 months from the granting of the licence.

If you are looking for a quiet environment, close to typical Spanish villages away from tourist crowds, surrounded by mountains, with a very large plot and about 30 minutes from the sea, this is your home.

Aspe is a typical Spanish village with all the amenities for everyday life, surrounded by mountains and with several natural areas nearby where you can go hiking or mountain biking.

Located 25 km from the beach, 9 km from Elche and about 20 km from Alicante airport.



Floor plans

Superficies utiles			
Comentarios	Nivel	Nombre	Área

Edificacion auxiliar	Nivel 1	Trastero	6.01 m²
Edificacion auxiliar			
			6.01 m²
Vivienda	Nivel 1	Salon - Comedor	35.23 m²
Vivienda	Nivel 1	Cocina	13.77 m²
Vivienda	Nivel 1	Recibidor	5.00 m²
Vivienda	Nivel 1	Distribuidor	11.93 m²
Vivienda	Nivel 1	Armario	1.93 m²
Vivienda	Nivel 1	Dormitorio 2	13.45 m²
Vivienda	Nivel 1	Dormitorio 3	14.32 m²
Vivienda	Nivel 1	Dormitorio 4	14.10 m²
Vivienda	Nivel 1	Baño 2	4.43 m²
Vivienda	Nivel 1	Aseo	3.27 m²
Vivienda	Nivel 1	Galeria	4.93 m²
Vivienda	Nivel 1	Pergola (100%)	27.68 m²
Vivienda	Nivel 1	Paseo cubierto (100%)	11.17 m²
Vivienda			
			161.21 m²
Nivel 1			
			167.22 m²
Vivienda	Nivel 2	Descansillo	2.17 m²
Vivienda	Nivel 2	Vestidor	7.77 m²
Vivienda	Nivel 2	Baño 1	7.93 m²
Vivienda	Nivel 2	Dormitorio 1	20.21 m²
Vivienda	Nivel 2	Escalera	5.15 m²
Vivienda			
			43.23 m²
Nivel 2			
			43.23 m²
TOTAL SUPERFICIE UTIL			
			210.45 m²

Superficies construidas		Área
Nombre		

Planta Baja	147.35 m²
Pergola (100%)	27.68 m²
Paseo cubierto (100%)	11.17 m²
Planta Primera	53.08 m²
Trastero	8.17 m²
Acceso	1.19 m²
TOTAL SUP. CONSTRUIDA	248.64 m²



Superficies utiles			
Comentarios	Nivel	Nombre	Área

Edificacion auxiliar	Nivel 1	Trastero	6.01 m²
Edificacion auxiliar			
			6.01 m²
Vivienda	Nivel 1	Salon - Comedor	35.23 m²
Vivienda	Nivel 1	Cocina	13.77 m²
Vivienda	Nivel 1	Recibidor	5.00 m²
Vivienda	Nivel 1	Distribuidor	11.93 m²
Vivienda	Nivel 1	Armario	1.93 m²
Vivienda	Nivel 1	Dormitorio 2	13.45 m²
Vivienda	Nivel 1	Dormitorio 3	14.32 m²
Vivienda	Nivel 1	Dormitorio 4	14.10 m²
Vivienda	Nivel 1	Baño 2	4.43 m²
Vivienda	Nivel 1	Aseo	3.27 m²
Vivienda	Nivel 1	Galeria	4.93 m²
Vivienda	Nivel 1	Pergola (100%)	27.68 m²
Vivienda	Nivel 1	Paseo cubierto (100%)	11.17 m²
Vivienda			
			161.21 m²
Nivel 1			
			167.22 m²
Vivienda	Nivel 2	Descansillo	2.17 m²
Vivienda	Nivel 2	Vestidor	7.77 m²
Vivienda	Nivel 2	Baño 1	7.93 m²
Vivienda	Nivel 2	Dormitorio 1	20.21 m²
Vivienda	Nivel 2	Escalera	5.15 m²
Vivienda			
			43.23 m²
Nivel 2			
			43.23 m²
TOTAL SUPERFICIE UTIL			
			210.45 m²

Superficies construidas		Área
Nombre		

Planta Baja	147.35 m²
Pergola (100%)	27.68 m²
Paseo cubierto (100%)	11.17 m²
Planta Primera	53.08 m²
Trastero	8.17 m²
Acceso	1.19 m²
TOTAL SUP. CONSTRUIDA	248.64 m²



Additional information

Facilities

Aircondition, Provision

Gated complex

Parking, Uncovered

Pool, Private

Features

Garden

Distances

Sea

 25 km

