

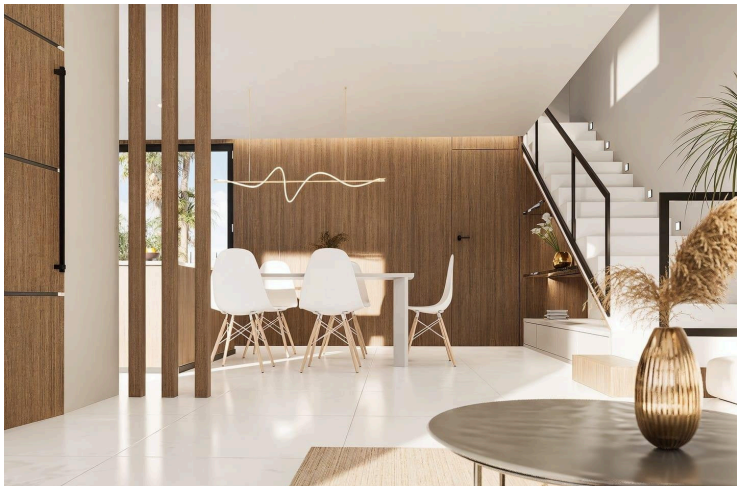
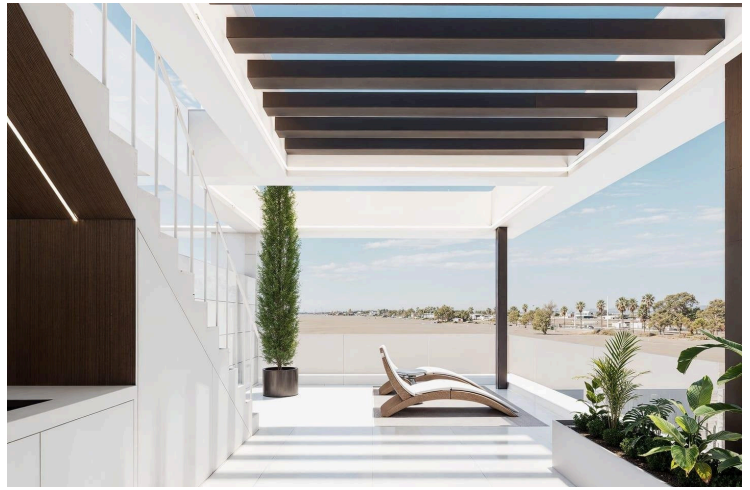
#8527

Contemporary Villas Near the Beach and Golf in Los Alcázares, Costa Cálida

 Los Alcazares, Murcia

€402,000





Overview

Specifications

Bedrooms

 3

Bathrooms

 3

Covered

 130 m²

Type

Villa

Status

Key ready

Energy efficiency rating

 **B**

Description

Contemporary Villas Near the Beach and Golf in Los Alcázares, Costa Cálida

Modern Living by the Sea and La Serena Golf

Located in Los Alcázares, one of the most vibrant towns on the Costa Cálida, this exclusive new development features elegant semi-detached villas with 3 bedrooms and 3 bathrooms, spread over two floors and topped with a spacious rooftop solarium. Designed for modern Mediterranean living, these homes offer the perfect balance of comfort, style, and location.

Just 700 meters from the beach, and within walking distance of La Serena Golf Course and the town centre, the villas are ideally situated to enjoy the best of the Mar Menor region.

Optional private pool, summer kitchen and jacuzzi are available for an additional cost, allowing each homeowner to personalize their property and make the most of the region's over 300 sunny days per year.

High-Quality Construction and Sustainable Features

Each villa is crafted with high-quality materials and energy-efficient features:

Armoured front door with security lock

Aluminium windows with thermal break, double glazing, and motorized blinds in bedrooms

White resin shower trays with glass screens

Bathroom furniture with mirrors included

Pre-installed ducted air conditioning system

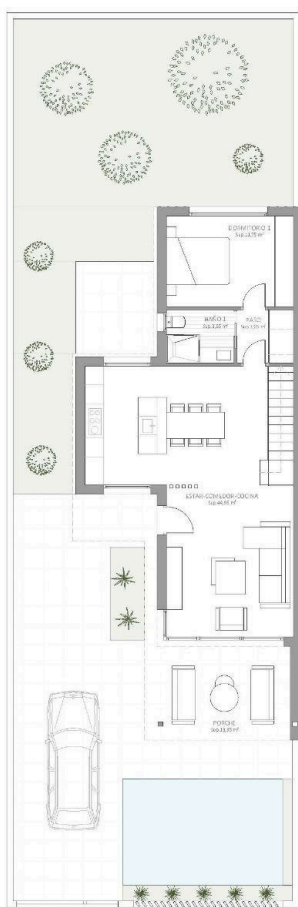
Photovoltaic solar panels for energy self-consumption

Automatic garden irrigation system

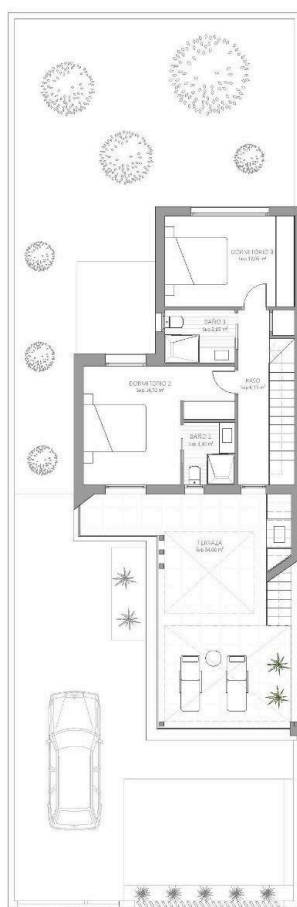
These sustainable features not only reduce energy costs but also support a more eco-friendly lifestyle.



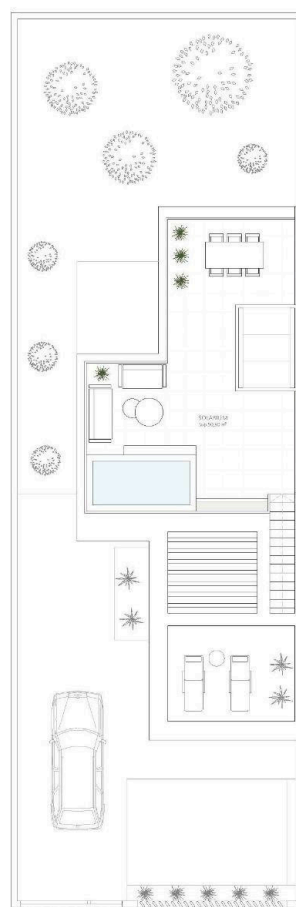
Floor plans



PLANTA BAJA



PLANTA PRIMERA



PLANTA SOLARIUM

CUADRO DE SUPERFICIES	
ESTANCIA	SU. ÚTIL (m²)
PLANTA BAJA	
Salón-comedor-cocina	44,95
Paso	3,05
Baño 1	3,65
Dormitorio 1	11,75
Porche	13,95
ÚTIL PLANTA BAJA	77,35

PLANTA PRIMERA	
Dormitorio 2	14,70
Dormitorio 3	12,05
Baño 2	3,30
Baño 3	3,85
Paso	6,15
Terraza	34,00
TOTAL ÚTIL	74,05

PLANTA SOLARIUM	
Solarium	50,90
ÚTIL PLANTA SOLARIUM	50,90

SUPERFICIE CONSTRUIDA	130,05
PORCHES + TERRAZAS	47,05
SUPERFICIE TOTAL	178,00

* PLANO COMERCIAL PROVISIONAL- Plano sujeto a posibles modificaciones por razones o exigencias de índole técnica o jurídica



Additional information

Facilities

Aircondition, Provision

Gated complex

Parking, Uncovered

Features

Garden

Golf course

Near bus route

Distances

Sea

 700 m

