

#8556

# Modern New Build Villas with Optional Private Pool in Pilar de la Horadada

 Pilar de la Horadada, Alicante

€285,000







# Overview

## Specifications

Bedrooms

 3

Bathrooms

 2

Covered

 90 m<sup>2</sup>

Type

**Townhouse**

Plot

**77 m<sup>2</sup>**

Status

**Key ready**

Energy efficiency rating

 **B**

## Description

Modern New Build Villas with Optional Private Pool in Pilar de la Horadada

Exclusive Development of 4 Contemporary Homes

This limited collection of four newly built semi-detached and terraced villas is located in a peaceful area of Pilar de la Horadada, just a few minutes from the town centre and 3 km from the Mediterranean beaches. Designed with a focus on comfort, style and energy efficiency, each home offers spacious living with the option to add a private pool and on-plot parking.

Elegant Design and Outdoor Living

Each villa includes three bedrooms and two full bathrooms, thoughtfully laid out across a bright and open-plan interior. A private garden and a generous rooftop solarium with pre-installation for an outdoor kitchen provide the perfect spaces to enjoy the Costa Blanca's year-round sunshine. The optional private pool adds an extra level of comfort for relaxing or entertaining.

High-Quality Features and Finishes

The homes are equipped with modern materials and finishes to ensure lasting quality and convenience:

Armoured front door for added security

Exterior carpentry in PVC with thermal break for improved insulation

Fully furnished bathrooms with shower screens

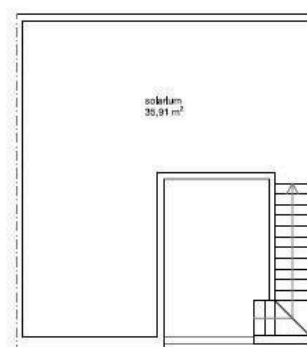
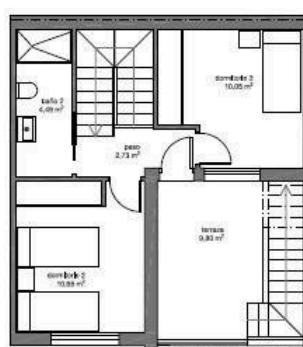
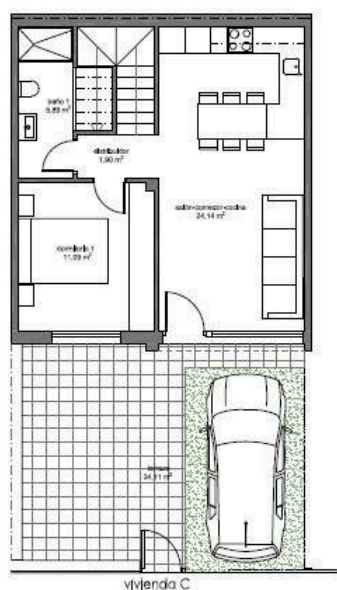
Underfloor heating in bathrooms for added comfort

Aerothermal system for domestic hot water

Pre-installed ducted air conditioning throughout



# Floor plans



SUPERFICIE CONSTRUIDA	
Vivienda A	m <sup>2</sup>
Planta baja	52.03
Planta primera	40.87
<b>Total vivienda A</b>	<b>92.90</b>
Vivienda B	m <sup>2</sup>
Planta baja	50.87
Planta primera	40.86
<b>Total vivienda B</b>	<b>91.73</b>
Vivienda C	m <sup>2</sup>
Planta baja	50.87
Planta primera	40.86
<b>Total vivienda C</b>	<b>91.73</b>
Vivienda D	m <sup>2</sup>
Planta baja	52.03
Planta primera	40.87
<b>Total vivienda D</b>	<b>92.90</b>
<b>TOTAL</b>	<b>369.26</b>

SUPERFICIE ÚTIL VIVIENDA C	
PLANTA BAJA	m <sup>2</sup>
Salón - comedor - cocina	24.14
Baño 1	5.89
Distribuidor	1.90
Dormitorio 1	11.09
PLANTA PRIMERA	11.18
Baño 2	4.49
Dormitorio 2	10.65
Dormitorio 3	10.05
Paseo	2.73
<b>TOTAL INTERIOR vivienda</b>	<b>82.12</b>
Exterior	m <sup>2</sup>
Terraza	34.11
Terraza 2	9.80
Solarium	35.91
<b>TOTAL EXTERIOR</b>	<b>79.82</b>



# Additional information

## Facilities

Aircondition, Provision

Gated complex

Parking, Uncovered

## Features

Garden

Near bus route

## Distances

Sea

 3 km

