

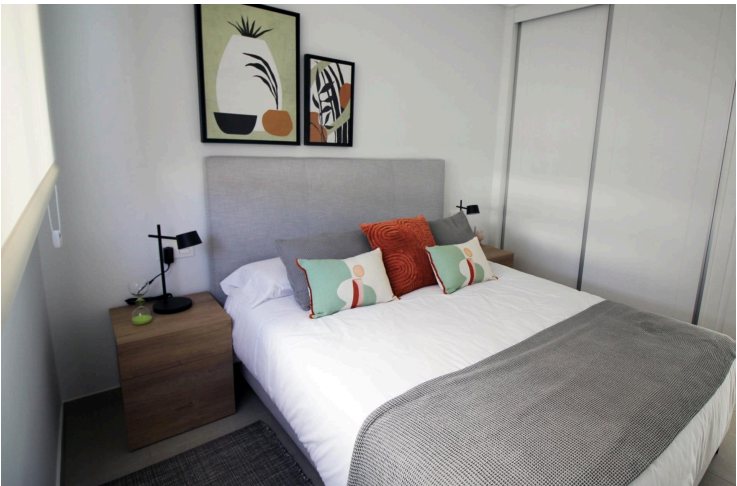
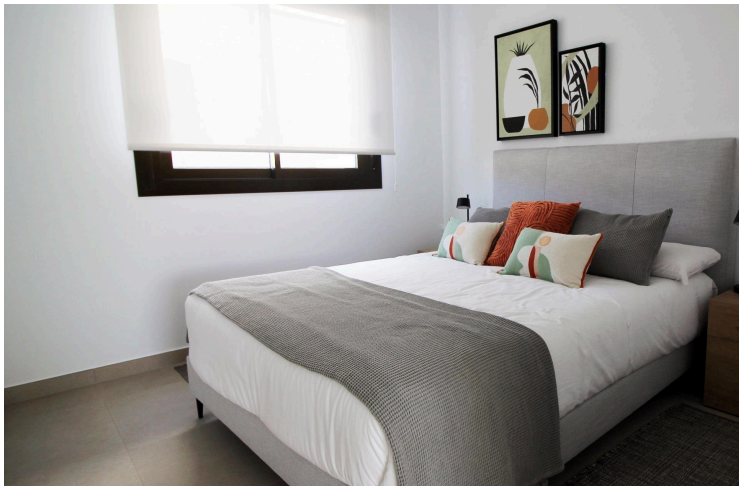
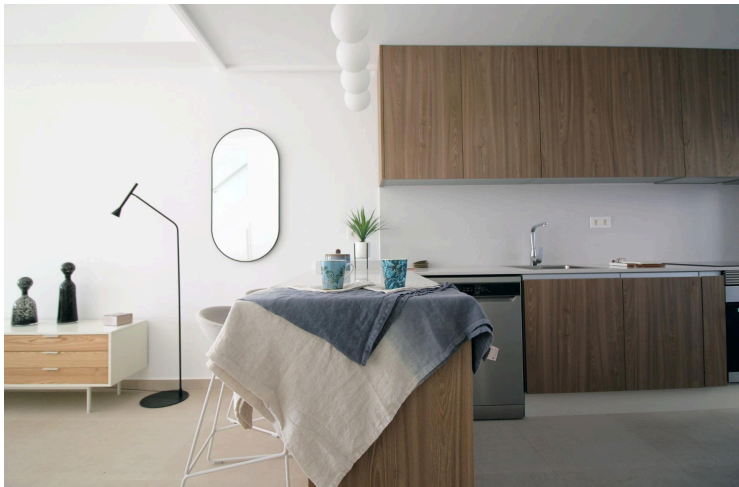
#8558

Modern Townhouses and Semi-Detached Homes in Pilar de la Horadada

 Pilar de la Horadada, Alicante

€354,900





Overview

Specifications

Bedrooms

 3

Bathrooms

 3

Covered

 107 m²

Type

Townhouse

Plot

97 m²

Status

Key ready

Energy efficiency rating

 **B**

Description

Modern Townhouses and Semi-Detached Homes in Pilar de la Horadada

Discover this exclusive residential development featuring only six modern semi-detached and terraced homes in the tranquil town of Pilar de la Horadada, on the southern tip of the Costa Blanca. Designed with contemporary architecture and high-quality finishes, these new-build properties offer a perfect blend of comfort and style in a sought-after location.

Spacious Three and Four Bedroom Layouts

Each home boasts spacious living areas with an open-plan kitchen and living room designed to maximise natural light. Choose from three or four-bedroom floor plans, with two or three bathrooms depending on the model. Ground-floor layouts include two terraces: a front terrace with space for private parking and a rear terrace with direct access to the communal pool. The first floor features an additional terrace off the bedrooms, while upstairs a rooftop solarium provides panoramic views and an ideal space for outdoor entertaining.

High-Quality Interior Finishes

Interiors are appointed with premium materials, including smooth plaster walls, porcelain tile flooring throughout, and fitted wardrobes in each bedroom. The open kitchens come fully equipped with modern cabinetry. Additional comforts include pre-installation for ducted air conditioning and aerothermal systems for energy-efficient hot water.

Community Amenities and Private Parking

Residents enjoy a well-maintained communal pool, perfect for relaxation on sunny days. Each home includes a private on-plot parking space, ensuring security and convenience.



Additional information

Facilities

Aircondition, Provision

Gated complex

Parking, Uncovered

Pool, Private

Features

Garden

Near bus route

Distances

Sea



1.8 km

