

#9436

Modern New Build Residences Just 800 m from El Pinet Beach

 La Marina, Alicante

€265,000





Overview

Specifications

Bedrooms


 2

Bathrooms

 2

Covered

 78 m²

Type	Apartment	Status	Key ready
Plot	9 m ²	Furnished	Fully furnished
Uncovered veranda	17 m ²	Energy efficiency rating	 B

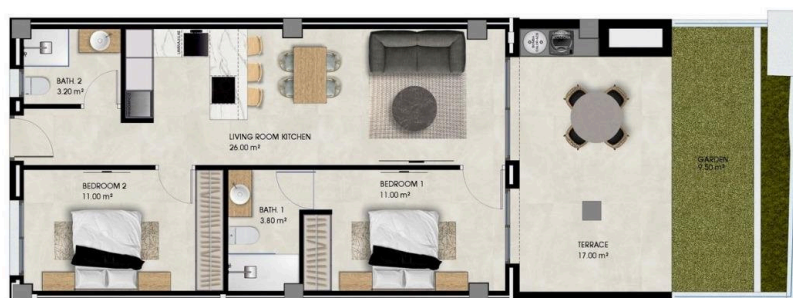
Description

Modern New Build Residences Just 800 m from El Pinet BeachExclusive Residential Complex in La Marina – ElcheDiscover this modern residential complex of 64 new build properties located in El Pinet, one of the most sought after coastal areas between La Marina and Elche. Just 800 m from the fine sandy beach of El Pinet, the development offers the perfect balance between Mediterranean lifestyle, nature and everyday convenience. The area is surrounded by protected dunes, pine forests and the famous Salinas de Santa Pola, creating a peaceful and natural environment ideal for year round living.Homes With 2 or 3 Bedrooms and Multiple Layout OptionsChoose from a variety of property types to suit your lifestyle. Options include ground floor homes with private gardens, middle floor apartments with spacious terraces or penthouses with private terraces and solarium. All units have been designed with modern lines, functional layouts and abundant natural light.High Quality Finishes and Ready to Move InEvery home comes fully equipped and furnished, offering exceptional value and comfort.Features include:Kitchens fully equipped with appliancesInterior and exterior lighting includedPreinstallation for ducted air conditioningElectric shuttersBathrooms with furniture, mirrors and shower screensUnderground parking space and storage roomAttractive Communal Areas for Relaxation and LeisureThe complex offers a range of amenities designed to enhance your lifestyle. Enjoy a large communal swimming pool, children’s play area and beautifully landscaped gardens. These spaces provide the perfect setting for relaxation, socialising and outdoor enjoyment under the Costa Blanca sun.Prime Coastal Location Close to All ServicesLiving in La Marina means enjoying excellent accessibility, natural surroundings and all essential services within easy reach. Shops, restaurants, supermarkets and leisure facilities are just a short walk away, while nearby towns offer even more amenities.Distances to Key Points of InterestPlaya de El Pinet 800 mCity of Elche 17 kmAlicante Elche International Airport 22 kmGolf courses La Marquesa and El Plantío 15 to 20 kmCity and port of Alicante 30 kmYour Ideal Mediterranean Lifestyle AwaitsWhether you are looking for a permanent home, a holiday residence or a smart investment, these new build homes in El Pinet offer an unbeatable combination of location, comfort and quality. Contact us today to arrange a visit and secure your dream property by the Mediterranean Sea.



Floor plans

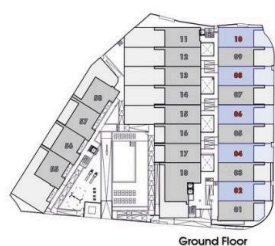
BLOCK 1 - House 02-04-06-08-10



BUILT SURFACE (Terrace 100%)	78.30 m ²
TOTAL USABLE SURFACE	72.00 m ²
GARDEN	9.50 m ²



DIN A3 (1/75)
0 1 2 3 4 5



Ground Floor



1st. Floor



2nd. Floor



Additional information

Facilities

Elevator

Gated complex

Parking, Uncovered

Pool, Communal

Features

Garden

Near bus route

Distances

Sea



800 m

