

DK-10325

# Modern and spacious villa with pool, basement and large roof terrace in Villamartin

 Villamartin, Alicante

**€469,000**







# Overview

## Specifications

Bedrooms



5

Bathrooms



4

Covered

112 m<sup>2</sup>

Type	<b>Detached Villa</b>
Plot	<b>334 m<sup>2</sup></b>
Basement	<b>121 m<sup>2</sup></b>
Roof garden	<b>112 m<sup>2</sup></b>
Status	<b>Resale</b>

Year of construction	<b>2016</b>
Furnished	<b>Fully furnished</b>
Communal charge	<b>€117</b>
Communal charge frequency	<b>Annually</b>
Suma/IBI	<b>€698</b>

## Description

This beautiful and well-maintained villa is located in the popular Villamartin area, close to Punta Prima – an area known for its excellent infrastructure, year-round life and close proximity to everything.

The villa offers 112 m<sup>2</sup> of living space on the main floor as well as a bright and highly usable basement of 121 m<sup>2</sup>, providing plenty of space and flexible living options. In total, the property features 5 bedrooms and 4 bathrooms, making it ideal as a permanent residence, holiday home or for a larger family.

### Main floor

On the main floor you will find 3 spacious bedrooms with built-in wardrobes and large windows that provide a lovely amount of natural light. The master bedroom has its own en-suite bathroom, direct access to the terrace and views of the pool. In addition, there is a second bathroom on this level.

The bright and open living area offers ample space for both a sofa/TV area and a dining area and is seamlessly connected to the functional kitchen, which provides plenty of storage space and good work surfaces.

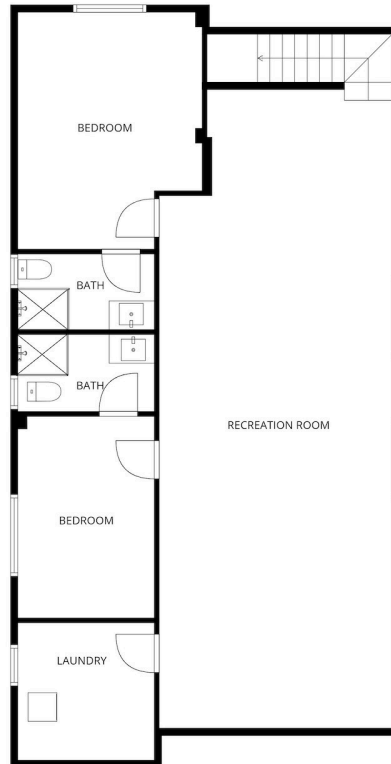
From the living room there is access to a covered terrace, which can be fully enclosed with awnings – perfect for both summer and winter use. From here you can enjoy views of the private 2.5 x 7 m swimming pool and the well-planned, low-maintenance outdoor areas.

There is parking space on the plot, and additional parking is available on the street directly in front of the house.

### Basement



# Floor plans



SIZES AND DIMENSIONS ARE APPROXIMATE, ACTUAL MAY VARY.



SIZES AND DIMENSIONS ARE APPROXIMATE, ACTUAL MAY VARY.



# Additional information

## Facilities

Aircondition, Central system

Heating, Underfloor

Outdoor shower

Pool, Private, salt water

## Features

Bathroom underfloor heating

Easy access to highway

Easy access to main roads

En suite bathroom

Fitted wardrobes

Internal stairs

Kitchen appliances

Laundry room

Modern design

Quiet area

Roof garden

Shutters, electric

Spacious rooms

Tile flooring

## Distances

Amenities



1.01 km

Airport



52 km

Sea



6.6 km

