

DK-10955

Charming top bungalow with sunny roof terrace in a peaceful area

 Playa Flamenca, Orihuela Costa, Alicante

€169,000





Overview

Specifications

Bedrooms

 2

Bathrooms

 1

Covered

 49 m²

Type	Bungalow
Covered veranda	6 m²
Roof garden	25 m²
Status	Resale
Year of construction	2003

Title deed	Yes
Furnished	Fully furnished
Communal charge	€180
Communal charge frequency	Semi-annually

Description

This well-maintained and inviting top-floor apartment is located in a quiet and attractive area, offering a perfect combination of privacy, sunshine, and close proximity to everyday amenities.

The bungalow is built in 2003, the property offers 49 m² of living space as well as a lovely private roof terrace of approximately 25 m², from where you can enjoy pleasant views over the surrounding area and even catch a glimpse of the sea on the horizon.

The apartment is bright and well laid out, with an efficient floor plan that makes optimal use of the space. You are welcomed through a charming glazed terrace, which serves as an additional living area all year round – perfect for your morning coffee or as a cozy reading corner.

Inside, you will find a bright and inviting living room with space for both dining and lounge areas.

Air conditioning with both cooling and heating ensures comfort throughout the year.

From the living room, there is a natural flow into the rest of the home, which consists of two good-sized bedrooms, both with built-in wardrobes and ceiling lights with fans.

The kitchen has been beautifully renovated and features a modern and stylish Danish Kvik kitchen, offering a level of quality rarely found in this type of property. In addition, a water filtration system has been installed, providing direct access to clean drinking water.

Adjacent to the kitchen is a practical patio area where the fridge/freezer, washing machine, and water heater are located.

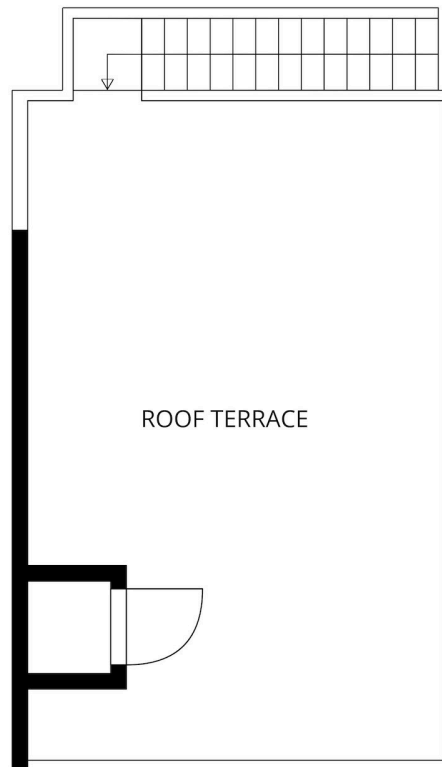
From here, you also have access to the stairs leading up to the property's true highlight.



Floor plans



SIZES AND DIMENSIONS ARE APPROXIMATE, ACTUAL MAY VARY.



SIZES AND DIMENSIONS ARE APPROXIMATE, ACTUAL MAY VARY.



Additional information

Facilities

Aircondition, Split system

Heating, Split system

Pool, Communal

Features

City view

Easy access to highway

Easy access to main roads

Fitted wardrobes

Internet

Kitchen appliances

Near bus route

Quiet area

Roof garden

Shutters

Spacious rooms

Tile flooring

Veranda, front

Distances

Amenities



1 km

Airport



51.7 km

Sea



3.8 km

