

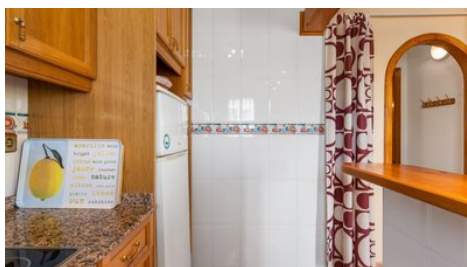
DK til Spanien



Quad house with very large garden

 Alicante, La Regia

DK-1873



Price	€189,000	Type	Quadplex
Bedrooms	2	Bathrooms	1
Covered	86 m ²	Roof garden	25 m ²
Covered veranda	12 m ²	Year of Construction	2003
Status	Resale	Suma/IBI	€289
Communal charge	€240	Area	Alicante, La Regia

Description

This Quad house is located in a quiet area but still close to both all amenities as well as good bathing beach.

The home contains: Ground floor with good living room in open connection with the kitchen, on the ground floor there is also a toilet. 1st floor contains: 2 bedrooms and a large bathroom with tub. Both bedrooms have fitted wardrobes. From the master bedroom there is a nice balcony. 2nd floor contains a nice roof terrace with storage room and a nice view of the area.

The house has a very large and good garden which opens up a myriad of possibilities. In front of the house, the garden is laid out as a large terrace, there is the possibility of parking several cars on the plot, the rest of the garden is today a recreational area, here it is possible to build a private pool and additional sun terraces.

The home has a unique location that is only 1.4 km walking distance to La Zenia beach, this particular beach is very popular. It's about. 1 km to the large and very popular Zenia Boulevard shopping center. The center contains about 125 shops as well as many cafes and all types of restaurants. Villamartin Golf Course is just 3.7 km away.

Facilities

Aircondition, Split system

Parking, Uncovered

Landscaped garden

Heating, Split system

Pool, Communal

Features

Easy access to highway

Balcony

Internal stairs

Guest WC

Walking distance to beach

Combined kitchen and dining area

Garden, large

Corner

Veranda

Kitchen appliances

Distances

Amenities

1 km

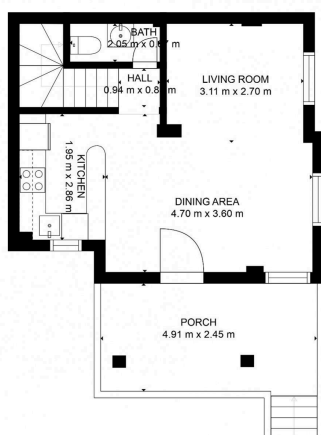
Airport

52 km

Sea

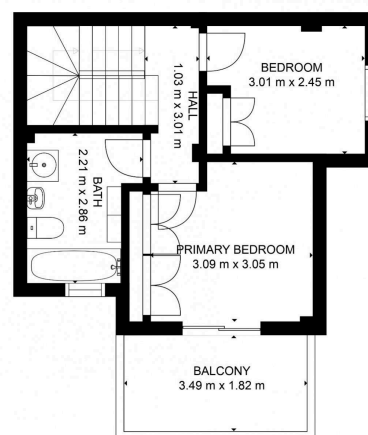
1.4 km

Floor plans



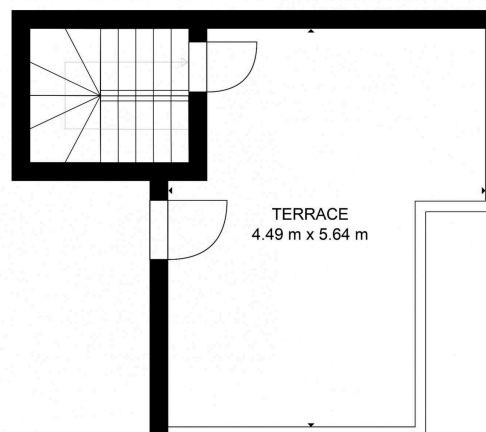
Estimated areas
 G.L.A FLOOR 1: 31 m², excluding 14 m²
 G.L.A FLOOR 1: 39 m², including 8 m²
 Total G.L.A FLOOR 1: 47 m², including 22 m²
 Total G.L.A FLOOR 1: 47 m², including 22 m²

SIZES AND DIMENSIONS ARE APPROXIMATE, ACTUAL MAY VARY.



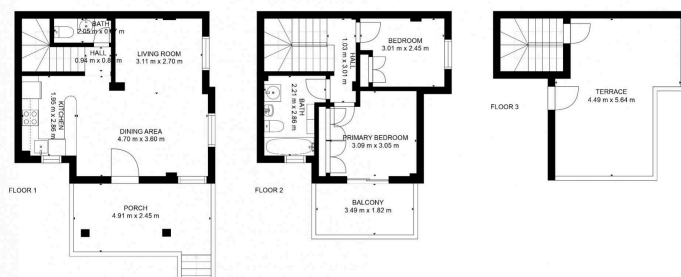
Estimated areas
 G.L.A FLOOR 2: 31 m², excluding 14 m²
 G.L.A FLOOR 2: 39 m², including 8 m²
 Total G.L.A FLOOR 2: 47 m², including 22 m²
 Total G.L.A FLOOR 2: 47 m², including 22 m²

SIZES AND DIMENSIONS ARE APPROXIMATE, ACTUAL MAY VARY.



Estimated areas
 G.L.A FLOOR 3: 31 m², excluding 14 m²
 G.L.A FLOOR 3: 39 m², including 8 m²
 Total G.L.A FLOOR 3: 47 m², including 22 m²
 Total G.L.A FLOOR 3: 47 m², including 22 m²

SIZES AND DIMENSIONS ARE APPROXIMATE, ACTUAL MAY VARY.



Estimated areas
 G.L.A FLOOR 1: 31 m², excluding 14 m²
 G.L.A FLOOR 2: 39 m², including 8 m²
 G.L.A FLOOR 3: 39 m², including 8 m²
 Total G.L.A FLOOR 1: 47 m², including 22 m²
 Total G.L.A FLOOR 1: 47 m², including 22 m²

SIZES AND DIMENSIONS ARE APPROXIMATE, ACTUAL MAY VARY.