

DK-8433

Lovely corner townhouse in popular complex with sea views

 Playa Flamenca, Alicante

€319,000





Overview

Specifications

Bedrooms

 3

Bathrooms

 3

Covered

 124 m²

Type	Townhouse
Showers	3
Status	Resale
Year of construction	2005

Furnished	Fully furnished
Communal charge	€424.37
Communal charge frequency	Quarterly

Description

Welcome to this charming end-terraced house in the attractive Zeniamar complex – a highly sought-after residential area in the heart of Orihuela Costa, perfectly located between Playa Flamenca and Punta Prima.

Here you truly get the best of both worlds: peaceful, green surroundings and yet close to everything you need for both holiday and year-round living.

Layout with Room for the Whole Family

The property offers a beautiful and well-maintained private garden with plenty of space to relax, sunbathe or enjoy cozy BBQ evenings.

A truly lovely and private outdoor area.

A glass-enclosed terrace extends the outdoor season and creates a welcoming oasis all year round.

Inside, you'll find a bright and inviting living room with an open-plan kitchen – ideal for entertaining and family time. From the kitchen, there is access to a practical patio with space for a washing machine.

On the ground floor, there is also a spacious bedroom and a bathroom – ideal for use as an office, guest room, or for those who prefer to avoid stairs in daily life.

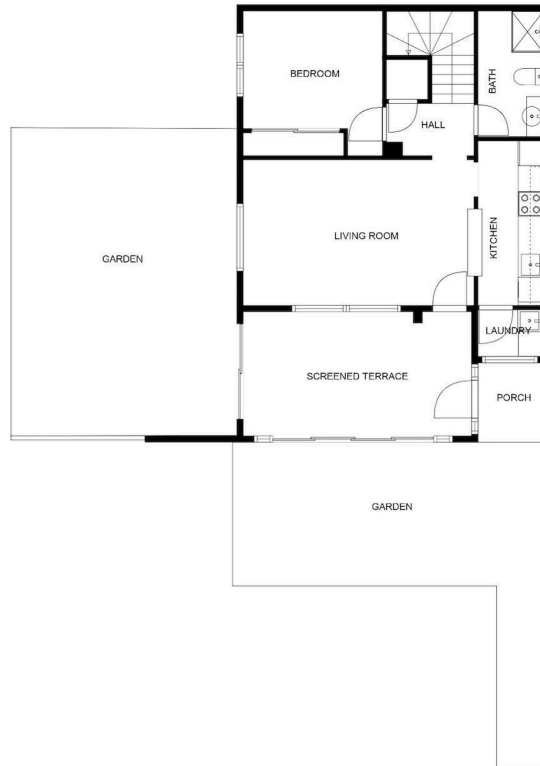
The first floor features two additional bedrooms, both with built-in wardrobes, and two bathrooms – one of which is an en-suite to the master bedroom.

From this floor, you can access a lovely terrace overlooking the area.

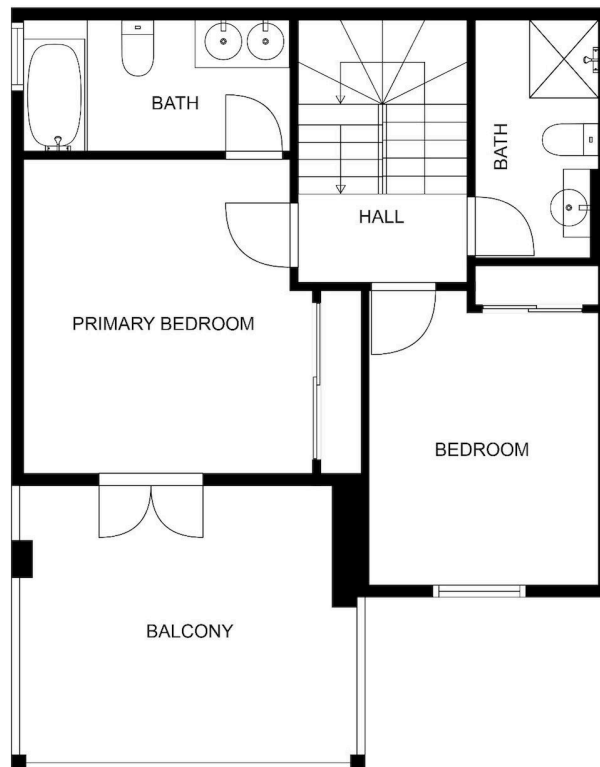
At the very top of the house, there's a great bonus: a bright and airy space that can be used as an extra bedroom, office, or storage area.



Floor plans



SIZES AND DIMENSIONS ARE APPROXIMATE, ACTUAL MAY VARY.



SIZES AND DIMENSIONS ARE APPROXIMATE, ACTUAL MAY VARY.



Additional information

Facilities

Aircondition, Split system

Pool, Communal

Heating, Split system

Tennis court

Landscaped garden

Features

Barbeque

Cul de sac

Fitted wardrobes

Internal stairs

Linen room

Roof garden

Spacious rooms

City view

Easy access to highway

Garden

Internet

Quiet area

Sea view

Tile flooring

Corner

Easy access to main roads

Ground floor bedroom

Kitchen appliances

Rental potential

Shutters

Distances

Amenities



300 m

Airport



50 km

Sea



2.6 km

