

DK-8610

Lovely penthouse with large roof terrace and views of the pool and sea – Great location in popular Playa Flamenca

 Playa Flamenca, Alicante

€215,000





Overview

Specifications

Bedrooms

 2


Bathrooms

 1

Covered

 54 m²

Type	Bungalow
Status	Resale
Year of construction	1998
Furnished	Fully furnished

Communal charge	€455
Communal charge frequency	Annually
Suma/IBI	€277
Energy efficiency rating	 F

Description

Welcome to this bright and well-maintained apartment in charming Spanish style – located in a sought-after area of Playa Flamenca, with everything you need within walking distance.

The apartment offers two good-sized bedrooms with built-in wardrobes and air conditioning, as well as a neat and functional bathroom.

The kitchen is bright and welcoming, with access to a practical utility patio where you'll find the washing machine and ample storage space.

The living room is spacious and filled with natural light – with access to a lovely southeast-facing terrace, ideal for a café table and enjoying the view of the beautifully maintained communal area with palm trees and a pool.

The awning provides pleasant shade on hot summer days.

From the terrace, a staircase leads up to the true gem of this apartment – the large private roof terrace! Up there you can enjoy the sun from morning to evening while taking in the breathtaking views of the palm-lined pool area and the sea on the horizon.

The roof terrace is equipped with a pergola for shade, a large storage room, and an outdoor shower – perfect for relaxing, sunbathing, and cozy evenings under the open sky.

Built in 1998, the property is in excellent condition.

It is sold fully furnished with all white goods included and is move-in ready.

There is air conditioning in both bedrooms and in the living room – all units with both heating and cooling functions. Additionally, a gas fireplace and electric radiators provide comfort during the cooler months.

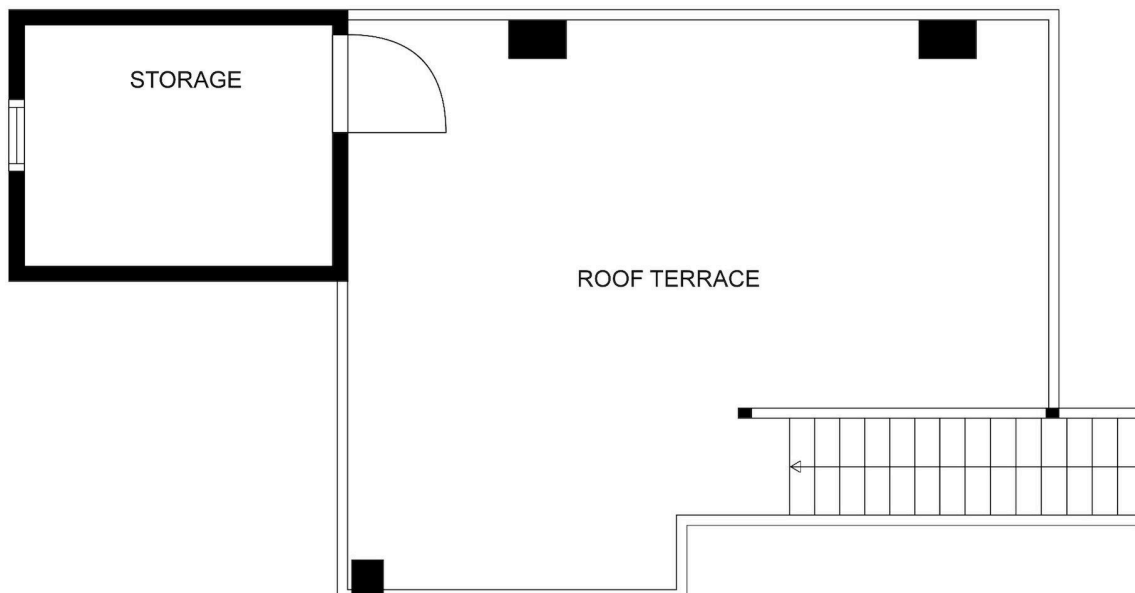
An added bonus is the installed water filtration system, allowing you to drink directly from the tap.



Floor plans



SIZES AND DIMENSIONS ARE APPROXIMATE, ACTUAL MAY VARY.



SIZES AND DIMENSIONS ARE APPROXIMATE, ACTUAL MAY VARY.



Additional information

Facilities

Aircondition, Split system

Heating, Split system

Outdoor shower

Pergola

Pool, Communal

Features

Balcony, front

Barbeque

City view

Tile flooring

Distances

Amenities



450 m

Airport



54 km

Sea



1.6 km

